

Product datasheet

HE 14 W/827

LUMILUX T5 HE | Tubular fluorescent lamps 16 mm, high efficiency, with G5 base



- Public buildings Offices Shops Supermarkets and department stores Industry Outdoor applications only in suitable luminaires

- Good economy and efficiency Up to 20 % more economical than LUMILUX T8 Up to 50 % smaller volume than comparable T8 lamps



Product datasheet

Technical data

Electrical data

| | |
|-------------------------------------|---------|
| Nominal voltage | 220 V |
| Nominal wattage | 14.00 W |
| Rated lamp efficacy (HF data 25 °C) | 86 lm/W |
| Rated wattage | 14.00 W |
| Nominal current | 0.17 A |

Photometrical data

| | |
|---------------------------|-----------------|
| Color rendering index Ra | ≥80 |
| Rated luminous flux | 1200 lm |
| Luminous flux at | 1200 lm |
| Luminous flux at | 1350 lm |
| Light color | 827 |
| Rated color temperature | 2700 K |
| Nominal luminous flux | 1200 lm |
| Light color (designation) | LUMILUX INTERNA |
| Rated LLMF at 2,000 h | 0.95 |
| Rated LLMF at 4,000 h | 0.92 |
| Rated LLMF at 6,000 h | 0.91 |
| Rated LLMF at 8,000 h | 0.9 |
| Rated LLMF at 12,000 h | 0.9 |
| Rated LLMF at 16,000 h | 0.9 |
| Rated LLMF at 20,000 h | 0.89 |
| Color temperature | 2700 K |
| Luminous flux | 1350 lm |

Dimensions & weight



Product datasheet

| | |
|---------------------------------------------|-----------|
| Tube diameter | 16 mm |
| Length | 549.0 mm |
| Length with base excl. base pins/connection | 549,00 mm |
| Diameter | 16.0 mm |
| Product weight | 44.26 g |
| Outer bulb | T16 |
| Overall length | 563.20 mm |
| Maximum diameter | 16.0 mm |

Temperatures & operating conditions

| | |
|----------------------------------------|---------|
| Rated ambient temp.w.max.luminous flux | 35.0 °C |
|----------------------------------------|---------|

Lifespan

| | |
|----------------------------------------|-----------------------|
| Service life | 19000 h ¹⁾ |
| Rated lamp survival factor at 2,000 h | 0.99 |
| Rated lamp survival factor at 4,000 h | 0.99 |
| Rated lamp survival factor at 6,000 h | 0.99 |
| Rated lamp survival factor at 8,000 h | 0.99 |
| Rated lamp survival factor at 12,000 h | 0.99 |
| Rated lamp survival factor at 16,000 h | 0.97 |
| Rated lamp survival factor at 20,000 h | 0.85 |
| Operation mode LLMF/LSF | HF |
| Rated lamp life time | 24000 h |

¹⁾ With preheat ECG

Additional product data

| | |
|-----------------------------------|--------------------------------------------------------------------------------------------------------------------------------------------|
| Base (standard designation) | G5 |
| Mercury content | 1.5 mg |
| Product remark | Suitable for ECG operation only Lamp designed for internal luminaire temperatures of 30...40 °C; optimum luminous flux achieved at 35 °C |
| Appropriate disposal acc. to WEEE | Yes |
| Successor EAN | 4050300645919 |
| Predecessor EAN | 4050300645933 |

Capabilities

| | |
|---------------------|-----|
| Dimmable | Yes |
| Suitable for indoor | Yes |

Certificates & standards

Product datasheet

| | |
|-------------------------|-----------------|
| Energy efficiency class | F |
| Energy consumption | 14.00 kWh/1000h |

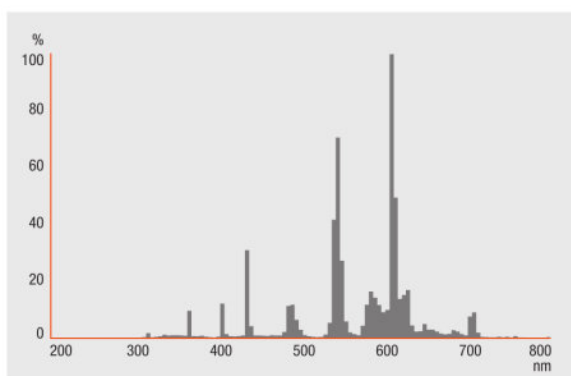
Country specific categorizations

| | |
|-----------------|------------|
| Order reference | HE 14W/827 |
|-----------------|------------|

Environmental information

| Information according Art. 33 of EU Regulation (EC) 1907/2006 (REACH) | |
|-----------------------------------------------------------------------|-------------------------------|
| Date of Declaration | 18-04-2022 |
| Primary Article Identifier | 4050300645919 4050300645933 |
| Declaration No. in SCIP database | In work |

Light Distribution

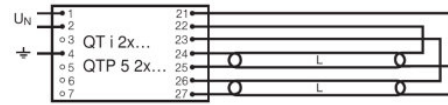
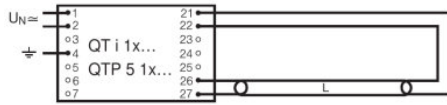


FL_827

System guarantee

OSRAM System+ Guarantee in combination with OSRAM ECGs

Product datasheet



QUICKTRONIC INTELLIGENT QT i 1x QTP 5 1x

QUICKTRONIC INTELLIGENT QT i 2x QTP 5 2x

Ecodesign regulation information:

Separate control gear and light sources must be disposed of at certified disposal companies in accordance with Directive 2012/19/EU (WEEE) in the EU and with Waste Electrical and Electronic Equipment (WEEE) Regulations 2013 in the UK. For this purpose, collection points for recycling centres and take-back systems (CRSO) are available from retailers or private disposal companies, which accept separate control gear and light sources free of charge. In this way, raw materials are conserved and materials are recycled.

Logistical Data

| Product code | Product description | Packaging unit (Pieces/Unit) | Dimensions (length x width x height) | Volume | Gross weight |
|---------------|---------------------|------------------------------------------|-----------------------------------------|----------------------|--------------|
| 4050300645919 | HE 14 W/827 | Shipping carton box 20 Pieces Sleeves | 582 mm x 83 mm x 104 mm | 5.02 dm ³ | 1371.00 g |

The mentioned product code describes the smallest quantity unit which can be ordered. One shipping unit can contain one or more single products. When placing an order, for the quantity please enter single or multiples of a shipping unit.

References / Links

For more information on the system guarantee and the terms and conditions of the guarantee visit

▶ www.osram.com/system-guarantee

Disclaimer

Subject to change without notice. Errors and omission excepted. Always make sure to use the most recent release.

OSRAM is distribution partner
of LEDVANCE of LAMPS

OSRAM

OSRAM GmbH
Marcel-Breuer-Strasse 6
80807 Munich, Germany

HE 14 W/827

LUMILUX T5 HE | Tubular fluorescent lamps 16 mm, high efficiency, with G5 base

| Product name | Product name ECG | EAN | Nominal current | Nominal wattage + Power loss | Power factor λ [PIM] | Luminous flux at 35 °C |
|--------------|-------------------------|---------------|-----------------|------------------------------|------------------------------|------------------------|
| HE 14 W/827 | QT-ECO 1x4-16/220-240 S | 4050300638584 | 0.10 A | 15.00 W | 0.60 c | 1150 lm |
| | QT-FIT 5 1x14-35 | 4008321971234 | 0.08 A | 16.00 W | 0.95 | 1200 lm |
| | QT-FIT 5 2x14-35 | 4008321971258 | 0.14 A | 32.00 W | 0.98 | 1200 lm |
| | QT-FIT 5 3x14, 4x14 | 4008321971210 | 0.28 A | 63.00 W | 0.98 | 1200 lm |
| | QTi 1x14/24/21/39 GII | 4008321383334 | 0.08 A | 16.00 W | 0.92 c | 1200 lm |
| | QTi 1x14/24 DIM | 4050300870922 | 0.07 A | 15.40 W | 0.96 | 1200 lm |
| | QTi 1x28/54/35/49 GII | 4008321383358 | 0.08 A | 16.00 W | 0.93 c | 1275 lm |
| | QTi 1x35/49/80 GII | 4008321383372 | 0.08 A | 16.00 W | 0.93 c | 1275 lm |
| | QTi 2x14/24/21/39 GII | 4008321383396 | 0.15 A | 31.00 W | 0.95 | 1200 lm |
| | QTi 2x14/24 DIM | 4050300870946 | 0.14 A | 30.60 W | 0.96 | 1200 lm |
| | QTi 2x28/54/35/49 GII | 4008321383419 | 0.15 A | 32.00 W | 0.93 c | 1275 lm |
| | QTi 2x35/49/80 GII | 4008321658951 | 0.18 A | 34.00 W | 0.95 | 1250 lm |
| | QTi 3x14/24 DIM | 4008321069719 | 0.20 A | 45.30 W | 0.97 | 1200 lm |
| | QTi 4x14/24 DIM | 4008321069993 | 0.27 A | 60.40 W | 0.97 | 1200 lm |
| | QTi DALI 1x14/24 DIM | 4050300870380 | 0.07 A | 15.40 W | 0.95 | 1200 lm |
| | QTi DALI 2x14/24 DIM | 4050300870861 | 0.14 A | 30.60 W | 0.95 | 1200 lm |
| | QTi DALI 3x14/24 DIM | 4008321069955 | 0.20 A | 45.30 W | 0.97 | 1200 lm |

Product datasheet

| Product name | Product name ECG | EAN | Nominal current | Nominal wattage + Power loss | Power factor λ [PIM] | Luminous flux at 35 °C |
|--------------|----------------------|---------------|-----------------|------------------------------|------------------------------|------------------------|
| | QTi DALI 4x14/24 DIM | 4008321070036 | 0.27 A | 60.40 W | 0.97 | 1200 lm |
| | QTP5 1x14-35 | 4008321329035 | 0.08 A | 16.00 W | 0.90 c | 1200 lm |
| | QTP5 2x14-35 | 4008321329073 | 0.14 A | 30.00 W | 0.98 | 1200 lm |
| | QTP5 3x14, 4x14 | 4008321484598 | 0.22 A | 63.00 W | 0.97 | 1350 lm |
| | QTP5 3x14, 4x14 | 4008321484598 | 0.28 A | 48.00 W | 0.95 | 1350 lm |

| Product name | Product name ECG | EAN | Number of lighting outlets | EEI – Energy Label | Luminous flux at 25 °C |
|--------------|-------------------------|---------------|----------------------------|--------------------|------------------------|
| HE 14 W/827 | QT-ECO 1x4-16/220-240 S | 4050300638584 | 1 | A2 | |
| | QT-FIT 5 1x14-35 | 4008321971234 | 1 | | |
| | QT-FIT 5 2x14-35 | 4008321971258 | 2 | | |
| | QT-FIT 5 3x14, 4x14 | 4008321971210 | 4 | | |
| | QTi 1x14/24/21/39 GII | 4008321383334 | 1 | | |
| | QTi 1x14/24 DIM | 4050300870922 | 1 | | |
| | QTi 1x28/54/35/49 GII | 4008321383358 | 1 | | |
| | QTi 1x35/49/80 GII | 4008321383372 | 1 | | |
| | QTi 2x14/24/21/39 GII | 4008321383396 | 2 | | |
| | QTi 2x14/24 DIM | 4050300870946 | 2 | | |
| | QTi 2x28/54/35/49 GII | 4008321383419 | 2 | | |
| | QTi 2x35/49/80 GII | 4008321658951 | 2 | | |
| | QTi 3x14/24 DIM | 4008321069719 | 3 | | |
| | QTi 4x14/24 DIM | 4008321069993 | 4 | | |

Product datasheet

| Product name | Product name ECG | EAN | Number of lighting outlets | EEI – Energy Label | Luminous flux at 25 °C |
|--------------|----------------------|---------------|----------------------------|--------------------|------------------------|
| | QTi DALI 1x14/24 DIM | 4050300870380 | 1 | | |
| | QTi DALI 2x14/24 DIM | 4050300870861 | 2 | | |
| | QTi DALI 3x14/24 DIM | 4008321069955 | 3 | | |
| | QTi DALI 4x14/24 DIM | 4008321070036 | 4 | | |
| | QTP5 1x14-35 | 4008321329035 | 1 | | |
| | QTP5 2x14-35 | 4008321329073 | 2 | | |
| | QTP5 3x14, 4x14 | 4008321484598 | 4 | | 1200 lm |
| | QTP5 3x14, 4x14 | 4008321484598 | 3 | | 1200 lm |