

Product datasheet

HE 14 W/840

LUMILUX T5 HE | Tubular fluorescent lamps 16 mm, high efficiency, with G5 base



- Public buildings Offices Shops Supermarkets and department stores Industry Outdoor applications only in suitable luminaires

- Good economy and efficiency Up to 20 % more economical than LUMILUX T8 Up to 50 % smaller volume than comparable T8 lamps



Product datasheet

Technical data

Electrical data

Nominal current	0.17 A A
-----------------	----------

Photometrical data

Luminous flux at	1350 lm
Light color (designation)	LUMILUX Cool White
Rated LLMF at 2,000 h	0.95
Rated LLMF at 4,000 h	0.93
Rated LLMF at 6,000 h	0.92
Rated LLMF at 8,000 h	0.9
Rated LLMF at 12,000 h	0.9
Rated LLMF at 16,000 h	0.9
Rated LLMF at 20,000 h	0.89
Luminous flux	1350 lm

Dimensions & weight



Tube diameter	16 mm
Length with base excl. base pins/connection	549,00 mm
Product weight	44.26 g
Overall length	563.20 mm

Lifespan

Service life	19000 h
--------------	---------

Additional product data

Mercury content	1.5 mg
-----------------	--------

Product datasheet

Product remark	Suitable for ECG operation only Lamp designed for internal luminaire temperatures of 30...40 °C; optimum luminous flux achieved at 35 °C
Appropriate disposal acc. to WEEE	Yes
Successor EAN	4050300591384
Predecessor EAN	4050300464688

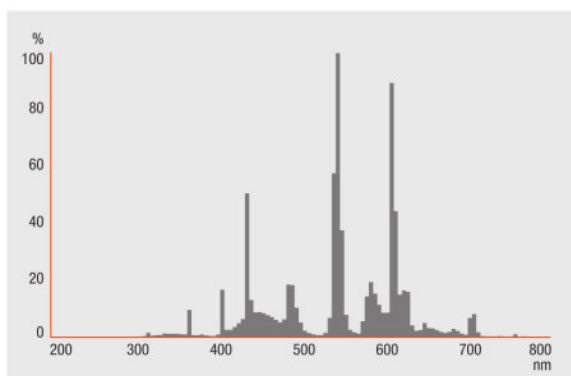
Certificates & standards

Energy efficiency class	F
Energy consumption	14.00 kWh/1000h

Environmental information

Information according Art. 33 of EU Regulation (EC) 1907/2006 (REACH)	
Date of Declaration	18-04-2022
Primary Article Identifier	4050300464688 4050300591384
Declaration No. in SCIP database	In work

Light Distribution

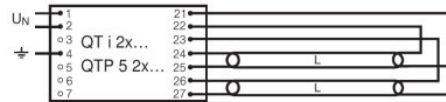
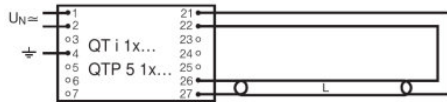


FL_840

Product datasheet

System guarantee

OSRAM System+ Guarantee in combination with OSRAM ECGs



QUICKTRONIC INTELLIGENT QT i 1x QTP 5 1x

QUICKTRONIC INTELLIGENT QT i 2x QTP 5 2x

Ecodesign regulation information:

Separate control gear and light sources must be disposed of at certified disposal companies in accordance with Directive 2012/19/EU (WEEE) in the EU and with Waste Electrical and Electronic Equipment (WEEE) Regulations 2013 in the UK. For this purpose, collection points for recycling centres and take-back systems (CRSO) are available from retailers or private disposal companies, which accept separate control gear and light sources free of charge. In this way, raw materials are conserved and materials are recycled.

Logistical Data

Product code	Product description	Packaging unit (Pieces/Unit)	Dimensions (length x width x height)	Volume	Gross weight
4050300464688	HE 14 W/840	Shipping carton box 40 Pieces Sleeves	598 mm x 95 mm x 198 mm	11.25 dm ³	2580.00 g
4050300591384	HE 14 W/840	Shipping carton box 20 Pieces Sleeves	587 mm x 90 mm x 129 mm	6.82 dm ³	1503.00 g

The mentioned product code describes the smallest quantity unit which can be ordered. One shipping unit can contain one or more single products. When placing an order, for the quantity please enter single or multiples of a shipping unit.

References / Links

For more information on the system guarantee and the terms and conditions of the guarantee visit

▶ www.osram.com/system-guarantee

Disclaimer

Subject to change without notice. Errors and omission excepted. Always make sure to use the most recent release.

OSRAM is distribution partner
of LEDVANCE of LAMPS

OSRAM

OSRAM GmbH
Marcel-Breuer-Strasse 6
80807 Munich, Germany

HE 14 W/840

LUMILUX T5 HE | Tubular fluorescent lamps 16 mm, high efficiency, with G5 base

Product name	Product name ECG	EAN	Nominal current	Nominal wattage + Power loss	Power factor λ [PIM]	Luminous flux at 35 °C
HE 14 W/840	QT-ECO 1x4-16/220-240 S	4050300638584	0.10 A	15.00 W	0.60 c	1150 lm
	QT-FIT 5 1x14-35	4008321971234	0.08 A	16.00 W	0.95	1200 lm
	QT-FIT 5 2x14-35	4008321971258	0.14 A	32.00 W	0.98	1200 lm
	QT-FIT 5 3x14, 4x14	4008321971210	0.28 A	63.00 W	0.98	1200 lm
	QTi 1x14/24/21/39 GII	4008321383334	0.08 A	16.00 W	0.92 c	1200 lm
	QTi 1x14/24 DIM	4050300870922	0.07 A	15.40 W	0.96	1200 lm
	QTi 1x28/54/35/49 GII	4008321383358	0.08 A	16.00 W	0.93 c	1275 lm
	QTi 1x35/49/80 GII	4008321383372	0.08 A	16.00 W	0.93 c	1275 lm
	QTi 2x14/24/21/39 GII	4008321383396	0.15 A	31.00 W	0.95	1200 lm
	QTi 2x14/24 DIM	4050300870946	0.14 A	30.60 W	0.96	1200 lm
	QTi 2x28/54/35/49 GII	4008321383419	0.15 A	32.00 W	0.93 c	1275 lm
	QTi 2x35/49/80 GII	4008321658951	0.18 A	34.00 W	0.95	1250 lm
	QTi 3x14/24 DIM	4008321069719	0.20 A	45.30 W	0.97	1200 lm
	QTi 4x14/24 DIM	4008321069993	0.27 A	60.40 W	0.97	1200 lm
	QTi DALI 1x14/24 DIM	4050300870380	0.07 A	15.40 W	0.95	1200 lm
	QTi DALI 2x14/24 DIM	4050300870861	0.14 A	30.60 W	0.95	1200 lm
	QTi DALI 3x14/24 DIM	4008321069955	0.20 A	45.30 W	0.97	1200 lm

Product datasheet

Product name	Product name ECG	EAN	Nominal current	Nominal wattage + Power loss	Power factor λ [PIM]	Luminous flux at 35 °C
	QTi DALI 4x14/24 DIM	4008321070036	0.27 A	60.40 W	0.97	1200 lm
	QTP5 1x14-35	4008321329035	0.08 A	16.00 W	0.90 c	1200 lm
	QTP5 2x14-35	4008321329073	0.14 A	30.00 W	0.98	1200 lm
	QTP5 3x14, 4x14	4008321484598	0.22 A	63.00 W	0.97	1350 lm
	QTP5 3x14, 4x14	4008321484598	0.28 A	48.00 W	0.95	1350 lm

Product name	Product name ECG	EAN	Number of lighting outlets	EEI – Energy Label	Luminous flux at 25 °C
HE 14 W/840	QT-ECO 1x4-16/220-240 S	4050300638584	1	A2	
	QT-FIT 5 1x14-35	4008321971234	1		
	QT-FIT 5 2x14-35	4008321971258	2		
	QT-FIT 5 3x14, 4x14	4008321971210	4		
	QTi 1x14/24/21/39 GII	4008321383334	1		
	QTi 1x14/24 DIM	4050300870922	1		
	QTi 1x28/54/35/49 GII	4008321383358	1		
	QTi 1x35/49/80 GII	4008321383372	1		
	QTi 2x14/24/21/39 GII	4008321383396	2		
	QTi 2x14/24 DIM	4050300870946	2		
	QTi 2x28/54/35/49 GII	4008321383419	2		
	QTi 2x35/49/80 GII	4008321658951	2		
	QTi 3x14/24 DIM	4008321069719	3		
	QTi 4x14/24 DIM	4008321069993	4		

Product datasheet

Product name	Product name ECG	EAN	Number of lighting outlets	EEI – Energy Label	Luminous flux at 25 °C
	QTi DALI 1x14/24 DIM	4050300870380	1		
	QTi DALI 2x14/24 DIM	4050300870861	2		
	QTi DALI 3x14/24 DIM	4008321069955	3		
	QTi DALI 4x14/24 DIM	4008321070036	4		
	QTP5 1x14-35	4008321329035	1		
	QTP5 2x14-35	4008321329073	2		
	QTP5 3x14, 4x14	4008321484598	4		1200 lm
	QTP5 3x14, 4x14	4008321484598	3		1200 lm