

# Product datasheet

## HO 54 W/830

LUMILUX T5 HO | Tubular fluorescent lamps 16 mm, high output, with G5 base



## Product datasheet

### Technical data

#### Electrical data

Nominal current	0.46 A
-----------------	--------

#### Photometrical data

Luminous flux at	5000 lm
Light color (designation)	LUMILUX Warm White
Rated LLMF at 2,000 h	0.95
Rated LLMF at 4,000 h	0.93
Rated LLMF at 6,000 h	0.92
Rated LLMF at 8,000 h	0.9
Rated LLMF at 12,000 h	0.9
Rated LLMF at 16,000 h	0.9
Rated LLMF at 20,000 h	0.89
Luminous flux	5000 lm

#### Dimensions & weight



Tube diameter	16 mm
Length with base excl. base pins/connection	1149 mm
Product weight	88.02 g
Overall length	1163.20 mm

#### Lifespan

Service life	19000 h
--------------	---------

#### Additional product data

Mercury content	2.0 mg
-----------------	--------

## Product datasheet

<b>Product remark</b>	Suitable for ECG operation only   Lamp designed for internal luminaire temperatures of 30...40 °C; optimum luminous flux achieved at 35 °C
<b>Appropriate disposal acc. to WEEE</b>	Yes
<b>Successor EAN</b>	4050300591605
<b>Predecessor EAN</b>	4050300453415

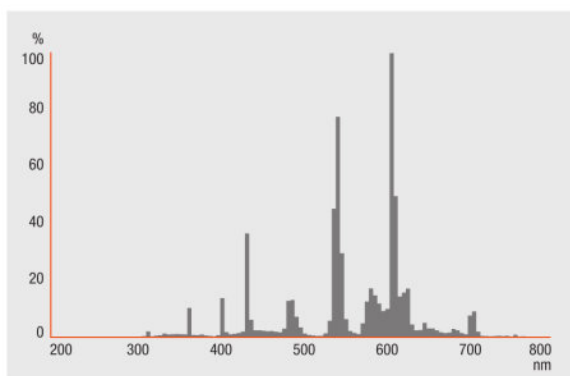
### Certificates & standards

<b>Energy efficiency class</b>	F
<b>Energy consumption</b>	54.00 kWh/1000h

### Environmental information

<b>Information according Art. 33 of EU Regulation (EC) 1907/2006 (REACH)</b>	
<b>Date of Declaration</b>	18-04-2022
<b>Primary Article Identifier</b>	4050300453415
<b>Declaration No. in SCIP database</b>	In work

### Light Distribution

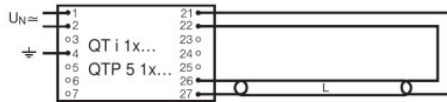


FL\_830

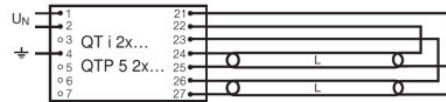
## Product datasheet

### System guarantee

OSRAM System+ Guarantee in combination with OSRAM ECGs



QUICKTRONIC INTELLIGENT QT i 1x QTP 5 1x



QUICKTRONIC INTELLIGENT QT i 2x QTP 5 2x

### Ecodesign regulation information:

Separate control gear and light sources must be disposed of at certified disposal companies in accordance with Directive 2012/19/EU (WEEE) in the EU and with Waste Electrical and Electronic Equipment (WEEE) Regulations 2013 in the UK. For this purpose, collection points for recycling centres and take-back systems (CRSO) are available from retailers or private disposal companies, which accept separate control gear and light sources free of charge. In this way, raw materials are conserved and materials are recycled.

### Logistical Data

Product code	Product description	Packaging unit (Pieces/Unit)	Dimensions (length x width x height)	Volume	Gross weight
4050300453415	HO 54 W/830	Shipping carton box 40 Pieces Unpacked	1200 mm x 83 mm x 194 mm	19.32 dm <sup>3</sup>	4813.00 g

The mentioned product code describes the smallest quantity unit which can be ordered. One shipping unit can contain one or more single products. When placing an order, for the quantity please enter single or multiples of a shipping unit.

### References / Links

For more information on the system guarantee and the terms and conditions of the guarantee visit

▶ [www.osram.com/system-guarantee](http://www.osram.com/system-guarantee)

### Disclaimer

Subject to change without notice. Errors and omission excepted. Always make sure to use the most recent release.

OSRAM is distribution partner  
of LEDVANCE of LAMPS

**OSRAM**

OSRAM GmbH  
Marcel-Breuer-Strasse 6  
80807 Munich, Germany

## HO 54 W/830

LUMILUX T5 HO | Tubular fluorescent lamps 16 mm, high output, with G5 base

Product name	Product name ECG	EAN	Nominal current	Nominal wattage + Power loss	Power factor $\lambda$ [PIM]	Luminous flux at 35 °C
HO 54 W/830	QT-FIT 5/8 1x54-58	4008321873828	0.25 A	59.00 W	0.98	4450 lm
	QT-FIT 5/8 2x54-58	4008321873842	0.49 A	116.00 W	0.98	4450 lm
	QTi 1x28/54/35/49 GII	4008321383358	0.26 A	58.00 W	0.97	4450 lm
	QTi 1x28/54 DIM	4050300870588	0.26 A	58.80 W	0.99	4450 lm
	QTi 2x28/54/35/49 GII	4008321383419	0.51 A	115.00 W	0.98	4450 lm
	QTi 2x28/54 DIM	4050300870717	0.51 A	115.00 W	0.98	4450 lm
	QTi DALI 1x28/54 DIM	4050300870809	0.26 A	58.80 W	0.99	4450 lm
	QTi DALI 2x28/54 DIM	4050300870502	0.51 A	115.00 W	0.99	4450 lm
	QTP-OPTIMAL 1x54-58	4008321873729	0.26 A	54.00 W	0.98	4450 lm
	QTP-OPTIMAL 2x54-58	4008321880253	0.52 A	120.00 W	0.99	4450 lm

Product name	Product name ECG	EAN	Number of lighting outlets
HO 54 W/830	QT-FIT 5/8 1x54-58	4008321873828	1
	QT-FIT 5/8 2x54-58	4008321873842	2
	QTi 1x28/54/35/49 GII	4008321383358	1
	QTi 1x28/54 DIM	4050300870588	1
	QTi 2x28/54/35/49 GII	4008321383419	2

## Product datasheet

Product name	Product name ECG	EAN	Number of lighting outlets
	QTi 2x28/54 DIM	4050300870717	2
	QTi DALI 1x28/54 DIM	4050300870809	1
	QTi DALI 2x28/54 DIM	4050300870502	2
	QTP-OPTIMAL 1x54-58	4008321873729	1
	QTP-OPTIMAL 2x54-58	4008321880253	2