

Product datasheet

HO 80 W/865

LUMILUX T5 HO | Tubular fluorescent lamps 16 mm, high output, with G5 base



Technical data

Electrical data

Nominal voltage	152 V
Nominal wattage	80.00 W
Rated lamp efficacy (HF data 25 °C)	Under clarification by authority and standardization body
Rated wattage	80.40 W
Nominal current	0.53 A

Photometrical data

Color rendering index Ra	≥80
Rated luminous flux	6650 lm
Luminous flux at	5700 lm
Luminous flux at	6650 lm
Light color	865
Rated color temperature	6500 K
Nominal luminous flux	6650 lm
Light color (designation)	LUMILUX Cool Daylight
Rated LLMF at 2,000 h	0.95
Rated LLMF at 4,000 h	0.93
Rated LLMF at 6,000 h	0.92
Rated LLMF at 8,000 h	0.9
Rated LLMF at 12,000 h	0.9
Rated LLMF at 16,000 h	0.9
Rated LLMF at 20,000 h	0.89
Color temperature	6500 K
Luminous flux	5700 lm

Dimensions & weight



Tube diameter	16 mm
Length	1463 mm
Length with base excl. base pins/connection	1449 mm
Diameter	16.0 mm
Product weight	115.00 g
Outer bulb	T16
Overall length	1449.00 mm
Maximum diameter	16 mm

Temperatures & operating conditions

Rated ambient temp.w.max.luminous flux	35.0 °C
---	---------

Lifespan

Service life	19000 h ¹⁾
Lifespan	24000 h ¹⁾
Operation mode LLMF/LSF	HF
Rated lamp life time	24000 h

¹⁾ With preheat ECG

Additional product data

Base (standard designation)	G5
Mercury content	1.7 mg
Product remark	Suitable for ECG operation only Lamp designed for internal luminaire temperatures of 30...40 °C; optimum luminous flux achieved at 35 °C
Appropriate disposal acc. to WEEE	Yes
Successor EAN	4050300591803
Predecessor EAN	4050300515113

Product datasheet

Capabilities

Dimmable	Yes
Suitable for indoor	Yes

Certificates & standards

Energy efficiency class	G
Energy consumption	87.78 kWh/1000h

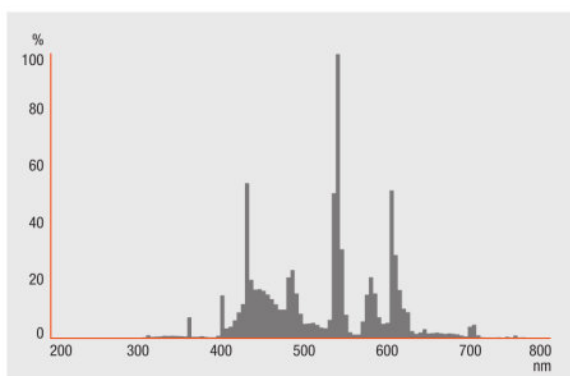
Country specific categorizations

Order reference	HO 80W/865
-----------------	------------

Environmental information

Information according Art. 33 of EU Regulation (EC) 1907/2006 (REACH)	
Date of Declaration	18-04-2022
Primary Article Identifier	4050300515113 4050300591803
Declaration No. in SCIP database	In work

Light Distribution

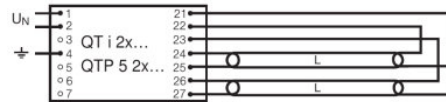
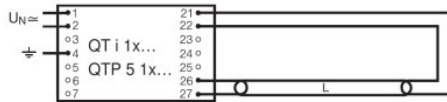


FL_865

Product datasheet

System guarantee

OSRAM System+ Guarantee in combination with OSRAM ECGs



QUICKTRONIC INTELLIGENT QT i 1x QTP 5 1x

QUICKTRONIC INTELLIGENT QT i 2x QTP 5 2x

Ecodesign regulation information:

Separate control gear and light sources must be disposed of at certified disposal companies in accordance with Directive 2012/19/EU (WEEE) in the EU and with Waste Electrical and Electronic Equipment (WEEE) Regulations 2013 in the UK. For this purpose, collection points for recycling centres and take-back systems (CRSO) are available from retailers or private disposal companies, which accept separate control gear and light sources free of charge. In this way, raw materials are conserved and materials are recycled.

Logistical Data

Product code	Product description	Packaging unit (Pieces/Unit)	Dimensions (length x width x height)	Volume	Gross weight
4050300515113	HO 80 W/865	Shipping carton box 40 Pieces Unpacked	1500 mm x 107 mm x 194 mm	31.14 dm ³	6258.00 g

The mentioned product code describes the smallest quantity unit which can be ordered. One shipping unit can contain one or more single products. When placing an order, for the quantity please enter single or multiples of a shipping unit.

References / Links

For more information on the system guarantee and the terms and conditions of the guarantee visit

▶ www.osram.com/system-guarantee

Disclaimer

Subject to change without notice. Errors and omission excepted. Always make sure to use the most recent release.

OSRAM is distribution partner
of LEDVANCE of LAMPS

OSRAM

OSRAM GmbH
Marcel-Breuer-Strasse 6
80807 Munich, Germany

HO 80 W/865

LUMILUX T5 HO | Tubular fluorescent lamps 16 mm, high output, with G5 base

Product name	Product name ECG	EAN	Nominal current	Nominal wattage + Power loss	Power factor λ [PIM]	Luminous flux at 35 °C
HO 80 W/865	QT-FQ 2x80	4050300825564	0.76 A	175.00 W	0.98	6300 lm
	QTi 1x35/49/80 DIM	4050300870540	0.39 A	88.10 W	0.99	6150 lm
	QTi 1x35/49/80 GII	4008321383372	0.38 A	85.00 W	0.98	6150 lm
	QTi 2x35/49/80 DIM	4050300870984	0.74 A	165.00 W	0.99	6150 lm
	QTi 2x35/49/80 GII	4008321658951	0.70 A	167.00 W	0.99	6150 lm
	QTi DALI 1x35/49/80 DIM	4050300870342	0.39 A	88.10 W	0.99	6150 lm
	QTi DALI 2x35/49/80 DIM	4050300870441	0.74 A	165.00 W	0.99	6150 lm
	QTP5 1x80	4008321329059	0.38 A	86.00 W	0.98	6150 lm

Product name	Product name ECG	EAN	Number of lighting outlets
HO 80 W/865	QT-FQ 2x80	4050300825564	2
	QTi 1x35/49/80 DIM	4050300870540	1
	QTi 1x35/49/80 GII	4008321383372	1
	QTi 2x35/49/80 DIM	4050300870984	2
	QTi 2x35/49/80 GII	4008321658951	2
	QTi DALI 1x35/49/80 DIM	4050300870342	1
	QTi DALI 2x35/49/80 DIM	4050300870441	2

Product datasheet

Product name	Product name ECG	EAN	Number of lighting outlets
	QTP5 1x80	4008321329059	1