

Product datasheet

L 6 W/640

Basic T5 Short | Tubular fluorescent lamps 16 mm, short, with G5 base



Product datasheet

Technical data

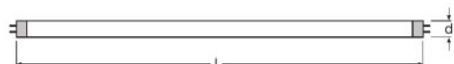
Electrical data

| | |
|-----------------|----------|
| Nominal current | 0.16 A A |
|-----------------|----------|

Photometrical data

| | |
|---------------------------|------------|
| Light color (designation) | Cool White |
| Rated LLMF at 2,000 h | 0.8 |
| Rated LLMF at 4,000 h | 0.74 |
| Rated LLMF at 6,000 h | 0.71 |
| Rated LLMF at 8,000 h | 0.69 |
| Luminous flux | 270 lm |

Dimensions & weight



| | |
|---|-----------|
| Tube diameter | 16 mm |
| Length with base excl. base pins/connection | 212,00 mm |
| Product weight | 20.02 g |
| Overall length | 226.30 mm |

Additional product data

| | |
|-----------------------------------|--------|
| Mercury content | 2.9 mg |
| Appropriate disposal acc. to WEEE | Yes |

Certificates & standards

| | |
|-------------------------|----------------|
| Energy efficiency class | G |
| Energy consumption | 7.00 kWh/1000h |

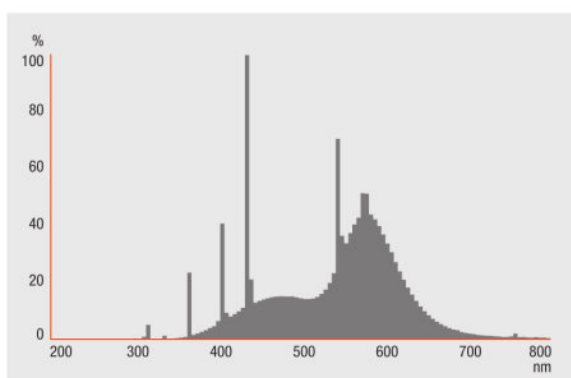
Environmental information

Product datasheet

Information according Art. 33 of EU Regulation (EC) 1907/2006 (REACH)

| | |
|----------------------------------|---------------|
| Date of Declaration | 18-04-2022 |
| Primary Article Identifier | 4050300008899 |
| Declaration No. in SCIP database | In work |

Light Distribution



FL_640

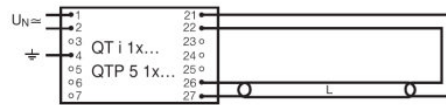
System guarantee

OSRAM System+ Guarantee in combination with OSRAM ECGs

Product datasheet

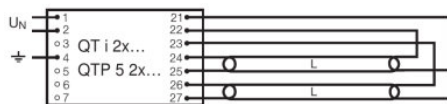


Die Zuleitungen 3 und 4 sollen so kurz wie möglich sein



QUICKTRONIC QT 1x

QUICKTRONIC INTELLIGENT QT i 1x QTP 5 1x



QUICKTRONIC INTELLIGENT QT i 2x QTP 5 2x

Ecodesign regulation information:

Separate control gear and light sources must be disposed of at certified disposal companies in accordance with Directive 2012/19/EU (WEEE) in the EU and with Waste Electrical and Electronic Equipment (WEEE) Regulations 2013 in the UK. For this purpose, collection points for recycling centres and take-back systems (CRSO) are available from retailers or private disposal companies, which accept separate control gear and light sources free of charge. In this way, raw materials are conserved and materials are recycled.

Logistical Data

| Product code | Product description | Packaging unit (Pieces/Unit) | Dimensions (length x width x height) | Volume | Gross weight |
|---------------|---------------------|--|---|----------------------|--------------|
| 4050300008899 | L 6 W/640 | Shipping carton box 25 Pieces Sleeves | 247 mm x 103 mm x 109 mm | 2.77 dm ³ | 713.00 g |

The mentioned product code describes the smallest quantity unit which can be ordered. One shipping unit can contain one or more single products. When placing an order, for the quantity please enter single or multiples of a shipping unit.

Product datasheet

References / Links

For more information on QUICKTRONIC electronic control gear go to

▶ www.osram.com/QUICKTRONIC

Disclaimer

Subject to change without notice. Errors and omission excepted. Always make sure to use the most recent release.

OSRAM is distribution partner
of LEDVANCE of LAMPS

OSRAM

OSRAM GmbH
Marcel-Breuer-Strasse 6
80807 Munich, Germany

L 6 W/640

Basic T5 Short | Tubular fluorescent lamps 16 mm, short, with G5 base

| Product name | Product name ECG | EAN | Nominal current | Nominal wattage + Power loss | Power factor λ [PIM] | Luminous flux at 35 °C |
|--------------|-------------------------|---------------|-----------------|------------------------------|------------------------------|------------------------|
| L 6 W/640 | QT-ECO 1x4-16/220-240 S | 4050300638584 | 0.06 A | 8.50 W | 0.60 c | 270 lm |
| | QT-ECO 2x5-11/220-240 S | 4050300821504 | 0.11 A | 14.50 W | 0.60 c | 280 lm |

| Product name | Product name ECG | EAN | Number of lighting outlets |
|--------------|-------------------------|---------------|----------------------------|
| L 6 W/640 | QT-ECO 1x4-16/220-240 S | 4050300638584 | 1 |
| | QT-ECO 2x5-11/220-240 S | 4050300821504 | 2 |