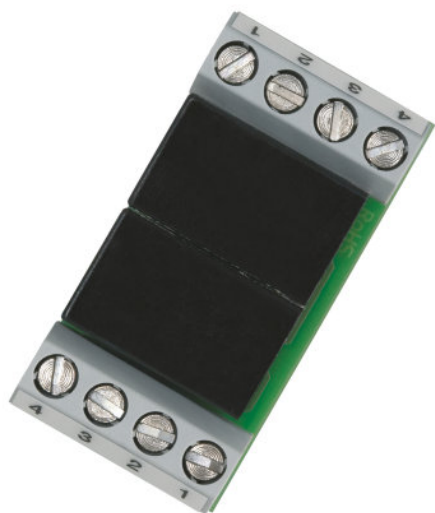


Y-CONNECTOR SCREW

Y-CONNECTOR SCREW | Branching for light management systems



Product family features

- Passive distributor
- Connection via 2x four-pole screw terminal or modular 2 x 4p4c-connector
- Type of installation: Adhesive pad mounting on smooth surfaces

Product family benefits

- For connecting standard wires to the sensor interface of the DALIeco system

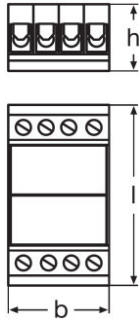
Areas of application

- Suitable for all OSRAM components with modular 4p4c connector system

Product datasheet

Technical data

Dimensions & weight



Length	40.0 mm
Width	20.0 mm
Height	16.0 mm
Product weight	100.00 g

Certificates & standards

Type of protection	IP20
--------------------	------

Logistical data

Commodity code	85366990990
----------------	-------------

Environmental information

Information according Art. 33 of EU Regulation (EC) 1907/2006 (REACH)	
Date of Declaration	19-01-2022
Primary Article Identifier	4008321916686
Declaration No. in SCIP database	In work



Equipment / Accessories

- 2 connecting cables included, modular 4p4c connector on both ends, length 2.1 m

Download Data

File

Product datasheet

	Declarations of conformity 334067_LMS MULTI3 SENSORS
	Installation/Operation notice 334156_Y-CONNECTOR SCREW – branch element with screw clamps

Logistical Data

Product code	Product description	Packaging unit (Pieces/Unit)	Dimensions (length x width x height)	Volume	Gross weight
4008321916686	Y-CONNECTOR SCREW	Shipping carton box 25	224 mm x 190 mm x 220 mm	9.36 dm ³	2965.00 g

The mentioned product code describes the smallest quantity unit which can be ordered. One shipping unit can contain one or more single products. When placing an order, for the quantity please enter single or multiples of a shipping unit.

Disclaimer

Subject to change without notice. Errors and omission excepted. Always make sure to use the most recent release.