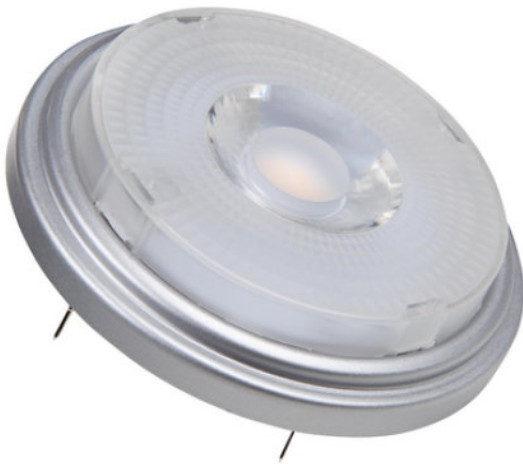


Product datasheet

PP LEDSPOT 111 1150 W/927 G53

PARATHOM PRO LEDspot 111 | LED reflector lamps AR111 with retrofit pin base



- Shops and exhibition rooms Domestic applications
Commercial applications Accent lighting Outdoor use in
outdoor luminaires only (minimum IP65)

- Quick, simple and safe replacement without rewiring Design, dimensions, luminous flux comparable to an incandescent or halogen lamp Low maintenance costs thanks to long lifetime No UV and near-IR radiation in the light beam Stepless dimming Very high dimmer compatibility, see also "www.ledvance.com/dim" Compatible with many common conventional and electronic control gears (see also "compatibility list") Instant 100 % light, no warm-up time



Technical data

Electrical data

Rated wattage	11,50 W
Nominal wattage	11,50 W
Nominal voltage	12 V
Claimed equiv. conventional lamp power	75 W
Operating frequency	50...60 Hz
Max. lamp no. on circuit break. 10 A (B)	4
Max. lamp no. on circuit break. 16 A (B)	6
Power factor λ	> 0,70
Nominal current	1.1 A A

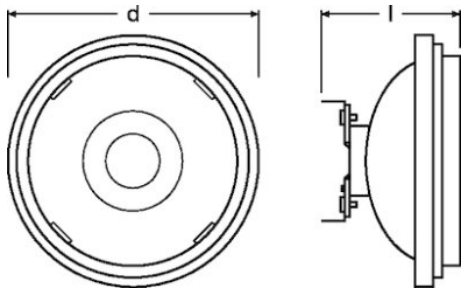
Photometrical data

Luminous intensity	2000 cd
Nominal luminous flux	800 lm
Rated luminous flux	800 lm
Rated color temperature	2700 K
Color rendering index Ra	97
Light color (designation)	Warm White
Standard deviation of color matching	≤ 4 sdcn
Nominal useful luminous flux 90°	800 lm
Rated useful luminous flux 90°	800 lm
Rated peak intensity	2000 cd
Color temperature	2700 K
Luminous flux	800 lm
Lumen main.fact.at end of nom.life time	0,70

Light technical data

Beam angle	24 °
Warm-up time (60 %)	< 0,10 s
Nominal beam angle	24 °
Rated beam angle (half peak value)	24.00 °
Starting time	< 0,1 s

Dimensions & weight



Overall length	62.00 mm
Diameter	110,7 mm
Outer bulb	AR111
Product weight	160.00 g
Length	62,0 mm
Maximum diameter	111 mm

Temperatures & operating conditions

Ambient temperature range	-20...+40 °C
---------------------------	--------------

Lifespan

Nominal lamp life time	40000 h
Rated lamp life time	40000 h
Number of switching cycles	100000
Lumen maintenance at end of service life	0.7

Additional product data

Base (standard designation)	G53
Mercury content	0.0 mg
Mercury-free	Yes
Appropriate disposal acc. to WEEE	Yes
Successor EAN	4058075608559
Product remark	All technical parameters apply to the entire lamp Due to the complex production process for light-emitting diodes, the typical values shown for the technical LED parameters are purely statistical values that do not necessarily match the actual technical parameters of each individual product, which can vary from the typical value

Product datasheet

Predecessor EAN	4058075105058, 4058075448889
-----------------	------------------------------

Capabilities

Dimmable	Si
----------	----

Certificates & standards

Energy efficiency class	G
Energy consumption	13.00 kWh/1000h
Type of protection	IP20

Country specific categorizations

Order reference	LPAR111 7524 11
-----------------	-----------------

Environmental information

Information according Art. 33 of EU Regulation (EC) 1907/2006 (REACH)	
Date of Declaration	18-04-2022
Primary Article Identifier	4058075448889 4058075608559
Declaration No. in SCIP database	In work

Ecodesign regulation information:

Separate control gear and light sources must be disposed of at certified disposal companies in accordance with Directive 2012/19/EU (WEEE) in the EU and with Waste Electrical and Electronic Equipment (WEEE) Regulations 2013 in the UK. For this purpose, collection points for recycling centres and take-back systems (CRSO) are available from retailers or private disposal companies, which accept separate control gear and light sources free of charge. In this way, raw materials are conserved and materials are recycled.

Logistical Data

Product code	Product description	Packaging unit (Pieces/Unit)	Dimensions (length x width x height)	Volume	Gross weight
4058075608559	PP LEDSPOT 111 1150 W/927 G53	Shipping carton box 6 Pieces Folding carton box	238 mm x 208 mm x 123 mm	6.09 dm ³	1125.00 g

The mentioned product code describes the smallest quantity unit which can be ordered. One shipping unit can contain one or more single products. When placing an order, for the quantity please enter single or multiples of a shipping unit.

References / Links

For dimming conformity see
▶ www.osram.com/DIM

Product datasheet

For Guarantee see <https://>

▶ www.inventronics-light.com/multilevel-guarantees

For further products and actual information concerning LED lamps see

▶ www.osram.com/ledlamps

Further information see

▶ www.osram.com/low-voltage-ledlamps

Disclaimer

Subject to change without notice. Errors and omission excepted. Always make sure to use the most recent release.

OSRAM is distribution partner
of LEDVANCE of LAMPS

OSRAM

OSRAM GmbH
Marcel-Breuer-Strasse 6
80807 Munich, Germany