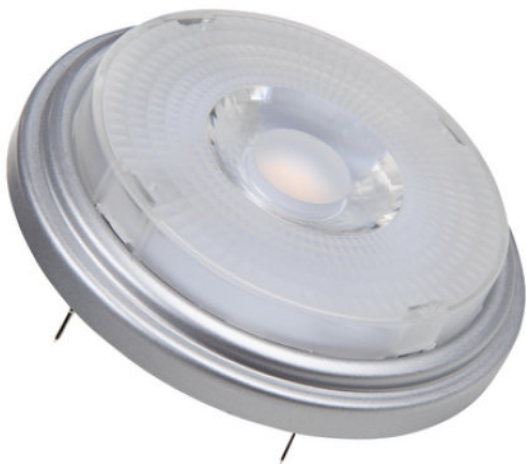


# Product datasheet

## PP LEDSPOT 111 1150 W/940 G53

**PARATHOM PRO LEDspot 111 | LED reflector lamps AR111 with retrofit pin base**



- Shops and exhibition rooms Domestic applications  
Commercial applications Accent lighting Outdoor use in  
outdoor luminaires only (minimum IP65)

- Quick, simple and safe replacement without rewiring Design, dimensions, luminous flux comparable to an incandescent or  
halogen lamp Low maintenance costs thanks to long lifetime No UV and near-IR radiation in the light beam Stepless  
dimming Very high dimmer compatibility, see also "[www.ledvance.com/dim](http://www.ledvance.com/dim)" Compatible with many common conventional  
and electronic control gears (see also "compatibility list") Instant 100 % light, no warm-up time



## Technical data

### Electrical data

Rated wattage	11.50 W
Nominal wattage	11.50 W
Nominal voltage	12 V
Claimed equiv. conventional lamp power	75 W
Operating frequency	50...60 Hz
Max. lamp no. on circuit break. 10 A (B)	4
Max. lamp no. on circuit break. 16 A (B)	6
Power factor $\lambda$	> 0,70
Nominal current	1.1 A

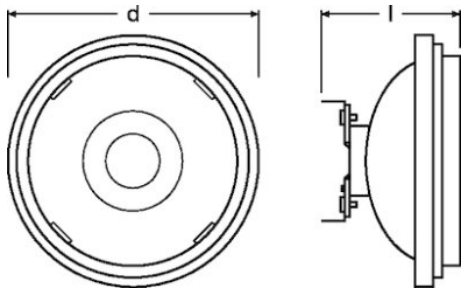
### Photometrical data

Luminous intensity	2800 cd
Nominal luminous flux	820 lm
Rated luminous flux	820 lm
Rated color temperature	4000 K
Color rendering index Ra	97
Light color (designation)	Cool White
Standard deviation of color matching	$\leq 4$ sdcn
Nominal useful luminous flux 90°	800 lm
Rated useful luminous flux 90°	800 lm
Rated peak intensity	2100 cd
Color temperature	4000 K
Luminous flux	820 lm
Lumen main.fact.at end of nom.life time	0.70

### Light technical data

Beam angle	24 °
Warm-up time (60 %)	< 0,10 s
Nominal beam angle	24 °
Rated beam angle (half peak value)	24.00 °
Starting time	< 0.1 s

Dimensions & weight



Overall length	62.0 mm
Diameter	110.7 mm
Outer bulb	AR111
Product weight	160.00 g
Length	62.0 mm
Maximum diameter	111.0 mm

Temperatures & operating conditions

Ambient temperature range	-20...+40 °C
---------------------------	--------------

Lifespan

Nominal lamp life time	40000 h
Rated lamp life time	40000 h
Number of switching cycles	100000
Lumen maintenance at end of service life	0.70

Additional product data

Base (standard designation)	G53
Mercury content	0.0 mg
Mercury-free	Yes
Appropriate disposal acc. to WEEE	Yes
Successor EAN	4058075608597
Product remark	All technical parameters apply to the entire lamp/Due to the complex production process for light-emitting diodes, the typical values shown for the technical LED parameters are purely statistical values that do not necessarily match the actual technical parameters of each individual product, which can vary from the typical value

Product datasheet

Predecessor EAN	4058075448926
-----------------	---------------

Capabilities

Dimmable	Yes
----------	-----

Certificates & standards

Energy efficiency class	G
Energy consumption	13 kWh/1000h
Type of protection	IP20

Country specific categorizations

Order reference	LPAR111 7524 11
-----------------	-----------------

Environmental information

Information according Art. 33 of EU Regulation (EC) 1907/2006 (REACH)	
Date of Declaration	18-04-2022
Primary Article Identifier	4058075448926   4058075608597
Declaration No. in SCIP database	In work

Ecodesign regulation information:

Separate control gear and light sources must be disposed of at certified disposal companies in accordance with Directive 2012/19/EU (WEEE) in the EU and with Waste Electrical and Electronic Equipment (WEEE) Regulations 2013 in the UK. For this purpose, collection points for recycling centres and take-back systems (CRSO) are available from retailers or private disposal companies, which accept separate control gear and light sources free of charge. In this way, raw materials are conserved and materials are recycled.

Logistical Data

Product code	Product description	Packaging unit (Pieces/Unit)	Dimensions (length x width x height)	Volume	Gross weight
4058075608597	PP LEDSPOT 111 1150 W/940 G53	Shipping carton box 6 Pieces Folding carton box	238 mm x 208 mm x 123 mm	6.09 dm <sup>3</sup>	1125.00 g

The mentioned product code describes the smallest quantity unit which can be ordered. One shipping unit can contain one or more single products. When placing an order, for the quantity please enter single or multiples of a shipping unit.

References / Links

For dimming conformity see  
▶ [www.osram.com/DIM](http://www.osram.com/DIM)

## Product datasheet

For Guarantee see <https://>

▶ [www.inventronics-light.com/multilevel-guarantees](https://www.inventronics-light.com/multilevel-guarantees)

For further products and actual information concerning LED lamps see

▶ [www.osram.com/ledlamps](https://www.osram.com/ledlamps)

Further information see

▶ [www.osram.com/low-voltage-ledlamps](https://www.osram.com/low-voltage-ledlamps)

---

### Disclaimer

Subject to change without notice. Errors and omission excepted. Always make sure to use the most recent release.

OSRAM is distribution partner  
of LEDVANCE of LAMPS

**OSRAM**

OSRAM GmbH  
Marcel-Breuer-Strasse 6  
80807 Munich, Germany