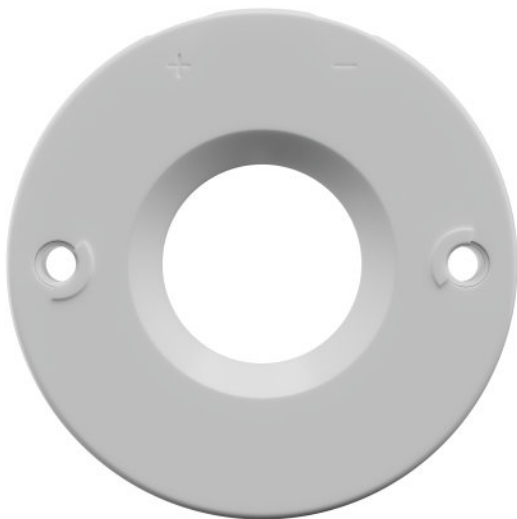


## PL-CORE HOLDER H1 FOR LES15

PrevaLED Core | – Accessories



### Product family features

- Suitable for all PrevaLED CORE CoBs with LES15

### Product family benefits

- Easy integration thanks to very compact form factor

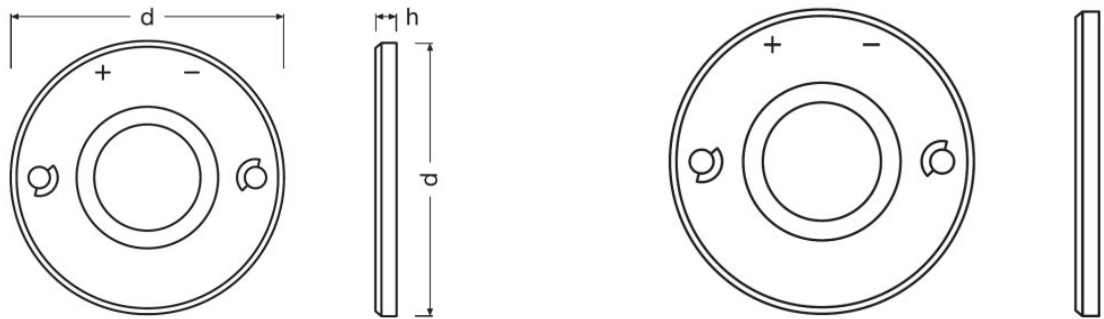
### Areas of application

- Spotlighting in shops and retail
- Down- and wall lighting in offices, corridors, meeting rooms, workplaces
- Decorative and functional lighting in hospitality, hotels, restaurants
- Functional lighting in public and commercial buildings

Product datasheet

Technical data

Dimensions & weight



Product weight	770 g
Length	440 mm
Height	34 mm





Logistical data

Commodity code	85419000000
----------------	-------------

Environmental information

Information according Art. 33 of EU Regulation (EC) 1907/2006 (REACH)	
Date of Declaration	31-03-2023
Primary Article Identifier	4062172315265
Candidate List Substance 1	No declarable substances contained
Declaration No. in SCIP database	No declarable substances contained

Download Data

File	
	CAD data PL CORE HOLDER H1 FOR LES15 STEP 291122
	CAD data PL CORE HOLDER H1 FOR LES15 IGS 291122
	CAD Data 2-dim PL CORE HOLDER H1 FOR LES15 CAD 2D 291122
	CAD data 3-dim PL CORE HOLDER H1 FOR LES15 CAD 3D 291122

# Product datasheet

## Logistical Data

Product code	Product description	Packaging unit (Pieces/Unit)	Dimensions (length x width x height)	Volume	Gross weight
4062172315265	PL-CORE HOLDER H1 FOR LES15	Shipping carton box 700	372 mm x 275 mm x 210 mm	21.48 dm <sup>3</sup>	9448.00 g

The mentioned product code describes the smallest quantity unit which can be ordered. One shipping unit can contain one or more single products. When placing an order, for the quantity please enter single or multiples of a shipping unit.

## Disclaimer

Subject to change without notice. Errors and omission excepted. Always make sure to use the most recent release.