

## LR700-SD-G1 840-09 8.6W 24VDC

LINEARlight Rigid NICHE | Professional LED modules



### Product family benefits

- Elegant appearance, soft lighting, super slim design
- Seamless connection hidden in the structure, homogeneous light
- Surface mounting with screws or magnets for easy installation
- Available in warm white and cool white
- Viewing angle per module: 120°
- Dimmable (with suitable PWM dimming methods)

### Areas of application

- Interior lighting
- Show case and stock shelf lighting
- Retail and supermarkets
- Corridors and stairwells



# Product datasheet

## Technical data

### Electrical data

Nominal voltage	24.0 V
Type of current	DC
Rated wattage	8.60 W
Input voltage range	23...25 V
Accidental reverse input voltage protection up to	25 V

### Photometrical data

Light color LED	White
Color temperature	4000 K <sup>1)</sup>
Color rendering index Ra	>80
Total useful luminous flux	663 lm
Luminous efficacy	76.7 lm/W
Light color (designation)	White

<sup>1)</sup> Emitted CCT 3600K

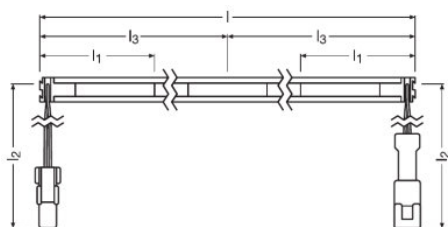
### Light technical data

Rated beam angle (half peak value)	123.00 °
Starting time	< 0.5 s
Warm-up time (60 %)	< 0.50 s

### LED module information

Number of LEDs per module	133
---------------------------	-----

### Dimensions & weight



Length	876.0 mm
Product weight	61.50 g

## Product datasheet

### Colors & materials

Cover material	Polycarbonate (PC)
Body material	Aluminum

### Temperatures & operating conditions

Maximum temperature at tc test point	70 °C
Temperature range at storage	-20...65 °C
Temperature range in operation at Tc point	-20...70 °C

### Certificates & standards

Standards	Acc. to IEC 62471/Acc. to EN 60529/Acc. to IEC 60598-1 (clause 15)/Acc. to EN 62031/Acc. to EN 55015/Acc. to EN 61547/CE
-----------	--






### Logistical data

Commodity code	940542319000
----------------	--------------

### Environmental information

Information according Art. 33 of EU Regulation (EC) 1907/2006 (REACH)	
Date of Declaration	23-12-2021
Primary Article Identifier	4052899557659
Candidate List Substance 1	No declarable substances contained
CAS No. of substance 1	No CAS
Declaration No. in SCIP database	No declarable substances contained

### Download Data

File
 User instruction LINEARlight Rigid NICHE
 Product Datasheet LINEARlight Rigid NICHE specification sheet
 Declarations of conformity Declaration of conformity LR700SD-G1
 CAD data LR700SD-G1-xxx-09
 Eulumdat Eulumdat LR700SD-G1-840-09

## Product datasheet

### Logistical Data

Product code	Product description	Packaging unit (Pieces/Unit)	Dimensions (length x width x height)	Volume	Gross weight
4052899557659	LR700-SD-G1 840-09 8.6W 24VDC	Shipping carton box 100	940 mm x 200 mm x 140 mm	26.32 dm <sup>3</sup>	12926.00 g

The mentioned product code describes the smallest quantity unit which can be ordered. One shipping unit can contain one or more single products. When placing an order, for the quantity please enter single or multiples of a shipping unit.

### Accessories Optional

Product description	Accessory name	Accessory code
LR700-SD-G1 840-09 8.6W 24VDC	LR700-SD-G1 -POWER CABLE 3000	▶ 4062172027229
LR700-SD-G1 840-09 8.6W 24VDC	LR700-SD-G1 -JUMPER CABLE 0300	▶ 4062172027243
LR700-SD-G1 840-09 8.6W 24VDC	LR700-SD-G1 -PLATE FOR MAGNET	▶ 4062172027267
LR700-SD-G1 840-09 8.6W 24VDC	LR700-SD-G1 -CONNECTORS HOLDER	▶ 4062172027281
LR700-SD-G1 840-09 8.6W 24VDC	LR700-SD-G1 -CLIP	▶ 4062172026918

### Disclaimer

Subject to change without notice. Errors and omission excepted. Always make sure to use the most recent release.