

LR700-SD-G1 830-12 11.7W 24VDC

LINEARlight Rigid NICHE | Professional LED modules



Product family benefits

- Elegant appearance, soft lighting, super slim design
- Seamless connection hidden in the structure, homogeneous light
- Surface mounting with screws or magnets for easy installation
- Available in warm white and cool white
- Viewing angle per module: 120°
- Dimmable (with suitable PWM dimming methods)

Areas of application

- Interior lighting
- Show case and stock shelf lighting
- Retail and supermarkets
- Corridors and stairwells



Product datasheet

Technical data

Electrical data

Nominal voltage	24.0 V
Type of current	DC
Rated wattage	11.70 W
Input voltage range	23...25 V
Accidental reverse input voltage protection up to	25 V

Photometrical data

Light color LED	White
Color temperature	3000 K ¹⁾
Color rendering index Ra	>80
Total useful luminous flux	848 lm
Luminous efficacy	71.4 lm/W
Light color (designation)	White

¹⁾ Emitted CCT 2800K

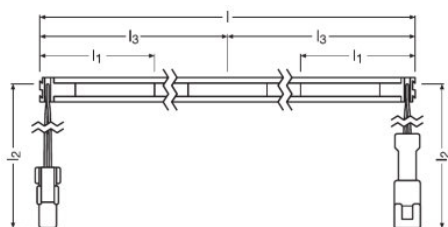
Light technical data

Rated beam angle (half peak value)	123.00 °
Starting time	< 0.5 s
Warm-up time (60 %)	< 0.50 s

LED module information

Number of LEDs per module	182
---------------------------	-----

Dimensions & weight



Length	1195 mm
Product weight	89.20 g

Product datasheet

Colors & materials

Cover material	Polycarbonate (PC)
Body material	Aluminum

Temperatures & operating conditions

Maximum temperature at tc test point	70 °C
Temperature range at storage	-20...65 °C
Temperature range in operation at Tc point	-20...70 °C

Certificates & standards

Standards	Acc. to IEC 62471/Acc. to EN 60529/Acc. to IEC 60598-1 (clause 15)/Acc. to EN 62031/Acc. to EN 55015/Acc. to EN 61547/CE
-----------	--





Logistical data

Commodity code	940540399000
----------------	--------------

Environmental information

Information according Art. 33 of EU Regulation (EC) 1907/2006 (REACH)	
Date of Declaration	23-12-2021
Primary Article Identifier	4052899557710
Candidate List Substance 1	No declarable substances contained
CAS No. of substance 1	No CAS
Declaration No. in SCIP database	No declarable substances contained

Download Data

File	
	Product Datasheet LINEARlight Rigid NICHE specification sheet
	Declarations of conformity Declaration of conformity LR700SD-G1
	CAD data LR700SD-G1-xxx-12
	Eulumdat Eulumdat LR700SD-G1-830-12

Product datasheet

Logistical Data

Product code	Product description	Packaging unit (Pieces/Unit)	Dimensions (length x width x height)	Volume	Gross weight
4052899557710	LR700-SD-G1 830-12 11.7W 24VDC	Shipping carton box 100	1260 mm x 200 mm x 140 mm	35.28 dm ³	17983.00 g

The mentioned product code describes the smallest quantity unit which can be ordered. One shipping unit can contain one or more single products. When placing an order, for the quantity please enter single or multiples of a shipping unit.

Accessories Optional

Product description	Accessory name	Accessory code
LR700-SD-G1 830-12 11.7W 24VDC	LR700-SD-G1 -POWER CABLE 3000	▶ 4062172027229
LR700-SD-G1 830-12 11.7W 24VDC	LR700-SD-G1 -JUMPER CABLE 0300	▶ 4062172027243
LR700-SD-G1 830-12 11.7W 24VDC	LR700-SD-G1 -PLATE FOR MAGNET	▶ 4062172027267
LR700-SD-G1 830-12 11.7W 24VDC	LR700-SD-G1 -CONNECTORS HOLDER	▶ 4062172027281
LR700-SD-G1 830-12 11.7W 24VDC	LR700-SD-G1 -CLIP	▶ 4062172026918

Disclaimer

Subject to change without notice. Errors and omission excepted. Always make sure to use the most recent release.