

## ELEMENT G3

Constant Current Compact – Non dimmable



### Product family features

- Fixed output (no dimming)
- Input voltage: 220 – 240 VAC
- Suitable for Class I/II luminaires
- Output current range 150-1050 mA
- Up to 30 000 h lifetime at  $t_{cmax} = 80\text{ °C}$
- Typ. Efficiency: from 82% to 90% depend on different wattage
- SELV
- Ambient temp range,  $t_a$ :  $-20\text{ °C}$  to  $+50\text{ °C}$

### Product family benefits

- Safety ensured by OSRAM (SELV)
- 3 years guarantee
- High quality of light with ripple current  $< 5\%$

### Areas of application

- Spot light and down light
- Panels
- Other Indoor LED luminaires

## Product family datasheet

### Technical data

Product description	Electrical data					
	Nominal input voltage	Mains frequency	Input voltage AC	Total harmonic distortion	Power factor $\lambda$	Efficiency in full-load
ELEMENT 6/220-240/150 G3	220...240 V	50/60 Hz	198...264 V	< 20 %	0.91...0.95	81 % <sup>1)</sup>
ELEMENT 8/220-240/200 G3	220...240 V	50/60 Hz	198...264 V	< 20 %	0.89C...0.95	83 % <sup>1)</sup>
ELEMENT 10/220-240/250 G3	220...240 V	50/60 Hz	198...264 V	< 15 %	0.90...0.95	85 % <sup>1)</sup>
ELEMENT 12/220-240/300 G3	220...240 V	50/60 Hz	198...264 V	< 10 %	0.93...0.97	86 % <sup>1)</sup>
ELEMENT 15/220-240/350 G3	220...240 V	50/60 Hz	198...264 V	< 10 %	0.95...0.97	86 % <sup>1)</sup>
ELEMENT 20/220-240/500 G3	220...240 V	50/60 Hz	198...264 V	< 15 %	0.92...0.97	87 % <sup>1)</sup>
ELEMENT 25/220-240/600 G3	220...240 V	50/60 Hz	198...264 V	< 15 %	0.94...0.97	87 % <sup>1)</sup>
ELEMENT 28/220-240/700 G3	220...240 V	50/60 Hz	198...264 V	< 20 %	0.89C...0.96	88 % <sup>1)</sup>
ELEMENT 33/220-240/800 G3	220...240 V	50/60 Hz	198...264 V	< 20 %	0.97	88 % <sup>1)</sup>
ELEMENT 35/220...240/900 G3	220...240 V	50/60 Hz	198...264 V	< 20 %	0.93...0.97	89 % <sup>1)</sup>
ELEMENT 38/220-240/950 G3	220...240 V	50/60 Hz	198...264 V	< 20 %	0.96	89 % <sup>1)</sup>
ELEMENT 42/220-240/1050 G3	220...240 V	50/60 Hz	198...264 V	< 20 %	0.92...0.97	90 % <sup>1)</sup>

Product description	Device power loss	Protective conductor current	Inrush current	Max. ECG no. on circuit breaker 10 A (B)	Max. ECG no. on circuit breaker 10 A (C)	Max. ECG no. on circuit breaker 16 A (C)
ELEMENT 6/220-240/150 G3	1.4 W <sup>2)</sup>	<0.7 mA	7 A <sup>3)</sup>	114	171	274
ELEMENT 8/220-240/200 G3	1.7 W <sup>10)</sup>	<0.7 mA	< 7.1 A <sup>3)</sup>	87	130	208
ELEMENT 10/220-240/250 G3	1.8 W <sup>11)</sup>	<0.7 mA	< 7.1 A <sup>3)</sup>	72	108	173
ELEMENT 12/220-240/300 G3	2.1 W <sup>12)</sup>	<0.7 mA	< 7.0 A <sup>3)</sup>	61	92	147
ELEMENT 15/220-240/350 G3	2.4 W <sup>13)</sup>	<0.7 mA	< 7.2 A <sup>3)</sup>	53	79	127
ELEMENT 20/220-240/500 G3	3.0 W <sup>14)</sup>	<0.7 mA	< 9.1 A <sup>3)</sup>	39	58	93
ELEMENT 25/220-240/600 G3	3.5 W <sup>15)</sup>	<0.7 mA	< 9.1 A <sup>3)</sup>	32	49	78
ELEMENT 28/220-240/700 G3	3.8 W <sup>16)</sup>	<0.7 mA	< 9.3 A <sup>3)</sup>	28	42	68
ELEMENT 33/220-240/800 G3	4.3 W <sup>17)</sup>	<0.7 mA	< 9.7 A <sup>3)</sup>	25	37	59
ELEMENT 35/220...240/900 G3	4.5 W <sup>18)</sup>	<0.7 mA	<11.4 A <sup>3)</sup>	22	33	52
ELEMENT 38/220-240/950 G3	4.7 W <sup>19)</sup>	<0.7 mA	< 11 A <sup>3)</sup>	21	31	50
ELEMENT 42/220-240/1050 G3	4.6 W <sup>20)</sup>	<0.7 mA	< 11.6 A <sup>3)</sup>	19	28	46

Product description	Max. ECG no. on circuit breaker 16 A (B)	Max. ECG no. on circuit breaker 25 A (B)	Surge capability (L/N-Ground)	Surge capability (L-N)	Nominal output voltage
ELEMENT 6/220-240/150 G3	182	285	2 kV	1 kV	24...42 V
ELEMENT 8/220-240/200 G3	139	217	2 kV	1 kV	24...42 V
ELEMENT 10/220-240/250 G3	115	180	2 kV	1 kV	24...42 V
ELEMENT 12/220-240/300 G3	98	153	2 kV	1 kV	24...42 V
ELEMENT 15/220-240/350 G3	85	132	2 kV	1 kV	24...42 V

## Product family datasheet

Product description	Max. ECG no. on circuit breaker 16 A (B)	Max. ECG no. on circuit breaker 25 A (B)	Surge capability (L/N-Ground)	Surge capability (L-N)	Nominal output voltage
ELEMENT 20/220-240/500 G3	62	97	2 kV	1 kV	21...40 V
ELEMENT 25/220-240/600 G3	52	81	2 kV	1 kV	21...40 V
ELEMENT 28/220-240/700 G3	45	70	2 kV	1 kV	21...40 V
ELEMENT 33/220-240/800 G3	39	62	2 kV	1 kV	21...40 V
ELEMENT 35/220...240/900 G3	35	55	2 kV	1 kV	21...40 V
ELEMENT 38/220-240/950 G3	33	52	2 kV	1 kV	21...40 V
ELEMENT 42/220-240/1050 G3	30	47	2 kV	1 kV	21...40 V

Product description	U-OUT (working voltage)	Nominal output current	Output current tolerance	Output ripple current (100 Hz)	Output PSTLM
ELEMENT 6/220-240/150 G3	60 V	150 mA	±10 %	< 5 %	≤1
ELEMENT 8/220-240/200 G3	60 V	200 mA	±10 %	< 5 %	≤1
ELEMENT 10/220-240/250 G3	60 V	250 mA	±7.5 %	< 5 %	≤1
ELEMENT 12/220-240/300 G3	60 V	300 mA	±7.5 %	< 5 %	≤1
ELEMENT 15/220-240/350 G3	60 V	350 mA	±7.5 %	< 5 %	≤1
ELEMENT 20/220-240/500 G3	60 V	500 mA	±7.5 %	< 5 %	≤1
ELEMENT 25/220-240/600 G3	60 V	600 mA	±7.5 %	< 5 %	≤1
ELEMENT 28/220-240/700 G3	60 V	700 mA	±7.5 %	< 5 %	≤1
ELEMENT 33/220-240/800 G3	60 V	800 mA	±7.5 %	< 5 %	≤1
ELEMENT 35/220...240/900 G3	60 V	900 mA	±7.5 %	< 5 %	≤1
ELEMENT 38/220-240/950 G3	60 V	950 mA	±7.5 %	< 5 %	≤1
ELEMENT 42/220-240/1050 G3	60 V	1050 mA	±7.5 %	< 5 %	≤1

Product description	Output SVM	Nominal output power	Maximum output power	Galvanic isolation
ELEMENT 6/220-240/150 G3	≤0.4	3.6...6.3 W <sup>4)</sup>	6.3 W	SELV
ELEMENT 8/220-240/200 G3	≤0.4	4.8...8.4 W <sup>4)</sup>	8.4 W	SELV
ELEMENT 10/220-240/250 G3	≤0.4	6...10.5 W <sup>4)</sup>	10.5 W	SELV
ELEMENT 12/220-240/300 G3	≤0.4	7.2...12.6 W <sup>4)</sup>	12.6 W	SELV
ELEMENT 15/220-240/350 G3	≤0.4	8.4...14.7 W <sup>4)</sup>	14.7 W	SELV
ELEMENT 20/220-240/500 G3	≤0.4	10.5...20 W <sup>4)</sup>	20 W	SELV
ELEMENT 25/220-240/600 G3	≤0.4	12.6...24 W <sup>4)</sup>	24 W	SELV
ELEMENT 28/220-240/700 G3	≤0.4	14.7...28 W <sup>4)</sup>	28 W	SELV
ELEMENT 33/220-240/800 G3	≤0.4	16.8...32 W <sup>4)</sup>	32 W	SELV
ELEMENT 35/220...240/900 G3	≤0.4	18.9...36 W <sup>4)</sup>	36 W	SELV
ELEMENT 38/220-240/950 G3	≤0.4	20...38 W <sup>4)</sup>	38 W	SELV
ELEMENT 42/220-240/1050 G3	≤0.4	22...42 W <sup>4)</sup>	42 W	SELV

## Product family datasheet

Product description	Galvanic isolation primary/secondary	Current set	Input voltage DC	Dimensions & weight	
				Mounting hole spacing, length	Mounting hole spacing, width
ELEMENT 6/220-240/150 G3	SELV	Fixed current	-	80.0 mm	34.0 mm
ELEMENT 8/220-240/200 G3	SELV	Fixed current	-	80.0 mm	34.0 mm
ELEMENT 10/220-240/250 G3	SELV	Fixed current	-	80.0 mm	34.0 mm
ELEMENT 12/220-240/300 G3	SELV	Fixed current	-	80.0 mm	34.0 mm
ELEMENT 15/220-240/350 G3	SELV	Fixed current	-	80.0 mm	34.0 mm
ELEMENT 20/220-240/500 G3	SELV	Fixed current	-	94.0 mm	34.7 mm
ELEMENT 25/220-240/600 G3	SELV	Fixed current	-	94.0 mm	34.7 mm
ELEMENT 28/220-240/700 G3	SELV	Fixed current	-	94.0 mm	34.7 mm
ELEMENT 33/220-240/800 G3	SELV	Fixed current	-	94.0 mm	34.7 mm
ELEMENT 35/220...240/900 G3	SELV	Fixed current	-	94.0 mm	34.7 mm
ELEMENT 38/220-240/950 G3	SELV	Fixed current	-	94.0 mm	34.7 mm
ELEMENT 42/220-240/1050 G3	SELV	Fixed current	-	94.0 mm	34.7 mm

Product description	Product weight	Cable cross- section, input side	Cable cross- section, output side	Wire preparation length, input side	Wire preparation length, output side
ELEMENT 6/220-240/150 G3	52.00 g	0.5...1.5 / 0.75...1.5 mm <sup>2</sup> 5)	0.5...1.5 / 0.75...1.5 mm <sup>2</sup> 5)	7...8 mm	7...8 mm
ELEMENT 8/220-240/200 G3	52.00 g	0.5...1.5 / 0.75...1.5 mm <sup>2</sup> 5)	0.5...1.5 / 0.75...1.5 mm <sup>2</sup> 5)	7...8 mm	7...8 mm
ELEMENT 10/220-240/250 G3	52.00 g	0.5...1.5 / 0.75...1.5 mm <sup>2</sup> 5)	0.5...1.5 / 0.75...1.5 mm <sup>2</sup> 5)	7...8 mm	7...8 mm
ELEMENT 12/220-240/300 G3	52.00 g	0.5...1.5 / 0.75...1.5 mm <sup>2</sup> 5)	0.5...1.5 / 0.75...1.5 mm <sup>2</sup> 5)	7...8 mm	7...8 mm
ELEMENT 15/220-240/350 G3	52.00 g	0.5...1.5 / 0.75...1.5 mm <sup>2</sup> 5)	0.5...1.5 / 0.75...1.5 mm <sup>2</sup> 5)	7...8 mm	7...8 mm
ELEMENT 20/220-240/500 G3	66.60 g	0.5...1.5 / 0.75...1.5 mm <sup>2</sup> 5)	0.5...1.5 / 0.75...1.5 mm <sup>2</sup> 5)	7...8 mm	7...8 mm
ELEMENT 25/220-240/600 G3	66.60 g	0.5...1.5 / 0.75...1.5 mm <sup>2</sup> 5)	0.5...1.5 / 0.75...1.5 mm <sup>2</sup> 5)	7...8 mm	7...8 mm
ELEMENT 28/220-240/700 G3	66.60 g	0.5...1.5 / 0.75...1.5 mm <sup>2</sup> 5)	0.5...1.5 / 0.75...1.5 mm <sup>2</sup> 5)	7...8 mm	7...8 mm
ELEMENT 33/220-240/800 G3	66.60 g	0.5...1.5 / 0.75...1.5 mm <sup>2</sup> 5)	0.5...1.5 / 0.75...1.5 mm <sup>2</sup> 5)	7...8 mm	7...8 mm
ELEMENT 35/220...240/900 G3	66.60 g	0.5...1.5 / 0.75...1.5 mm <sup>2</sup> 5)	0.5...1.5 / 0.75...1.5 mm <sup>2</sup> 5)	7...8 mm	7...8 mm
ELEMENT 38/220-240/950 G3	66.60 g	0.5...1.5 / 0.75...1.5 mm <sup>2</sup> 5)	0.5...1.5 / 0.75...1.5 mm <sup>2</sup> 5)	7...8 mm	7...8 mm
ELEMENT 42/220-240/1050 G3	66.60 g	0.5...1.5 / 0.75...1.5 mm <sup>2</sup> 5)	0.5...1.5 / 0.75...1.5 mm <sup>2</sup> 5)	7...8 mm	7...8 mm

## Product family datasheet

Product description	Height	Width	Length	Colors & materials		Temperatures & operating conditions	
				Casing material		Ambient temperature range	Maximum temperature at tc test point
ELEMENT 6/220-240/150 G3	22.0 mm	43.0 mm	90.0 mm	Plastic housing		-20...+50 °C	80 °C
ELEMENT 8/220-240/200 G3	22.0 mm	43.0 mm	90.0 mm	Plastic housing		-20...+50 °C	80 °C
ELEMENT 10/220-240/250 G3	22.0 mm	43.0 mm	90.0 mm	Plastic housing		-20...+50 °C	80 °C
ELEMENT 12/220-240/300 G3	22.0 mm	43.0 mm	90.0 mm	Plastic housing		-20...+50 °C	80 °C
ELEMENT 15/220-240/350 G3	22.0 mm	43.0 mm	90.0 mm	Plastic housing		-20...+50 °C	80 °C
ELEMENT 20/220-240/500 G3	29.0 mm	43.0 mm	103.0 mm	Plastic housing		-20...+50 °C	80 °C
ELEMENT 25/220-240/600 G3	29.0 mm	43.0 mm	103.0 mm	Plastic housing		-20...+50 °C	80 °C
ELEMENT 28/220-240/700 G3	29.0 mm	43.0 mm	103.0 mm	Plastic housing		-20...+50 °C	80 °C
ELEMENT 33/220-240/800 G3	29.0 mm	43.0 mm	103.0 mm	Plastic housing		-20...+50 °C	80 °C
ELEMENT 35/220...240/900 G3	29.0 mm	43.0 mm	103.0 mm	Plastic housing		-20...+50 °C	80 °C
ELEMENT 38/220-240/950 G3	29.0 mm	43.0 mm	103.0 mm	Plastic housing		-20...+50 °C	80 °C
ELEMENT 42/220-240/1050 G3	29.0 mm	43.0 mm	103.0 mm	Plastic housing		-20...+45 °C	80 °C

Product description	Max.housing temperature in case of fault	Temperature range at storage	Permitted rel. humidity during operation	Lifespan		Additional product data
				ECG lifetime	Encapsulated	
ELEMENT 6/220-240/150 G3	110 °C	-40...+85 °C	5...85 % <sup>6)</sup>	30000 / 50000 h <sup>7)</sup>	No	
ELEMENT 8/220-240/200 G3	110 °C	-40...+85 °C	5...85 % <sup>6)</sup>	30000 / 50000 h <sup>7)</sup>	No	
ELEMENT 10/220-240/250 G3	110 °C	-40...+85 °C	5...85 % <sup>6)</sup>	30000 / 50000 h <sup>7)</sup>	No	
ELEMENT 12/220-240/300 G3	110 °C	-40...+85 °C	5...85 % <sup>6)</sup>	30000 / 50000 h <sup>7)</sup>	No	
ELEMENT 15/220-240/350 G3	110 °C	-40...+85 °C	5...85 % <sup>6)</sup>	30000 / 50000 h <sup>7)</sup>	No	
ELEMENT 20/220-240/500 G3	110 °C	-40...+85 °C	5...85 % <sup>6)</sup>	30000 / 50000 h <sup>7)</sup>	No	
ELEMENT 25/220-240/600 G3	110 °C	-40...+85 °C	5...85 % <sup>6)</sup>	30000 / 50000 h <sup>7)</sup>	No	
ELEMENT 28/220-240/700 G3	110 °C	-40...+85 °C	5...85 % <sup>6)</sup>	30000 / 50000 h <sup>7)</sup>	No	
ELEMENT 33/220-240/800 G3	110 °C	-40...+85 °C	5...85 % <sup>6)</sup>	30000 / 50000 h <sup>7)</sup>	No	
ELEMENT 35/220...240/900 G3	110 °C	-40...+85 °C	5...85 % <sup>6)</sup>	30000 / 50000 h <sup>7)</sup>	No	
ELEMENT 38/220-240/950 G3	110 °C	-40...+85 °C	5...85 % <sup>6)</sup>	30000 / 50000 h <sup>7)</sup>	No	
ELEMENT 42/220-240/1050 G3	110 °C	-40...+85 °C	5...85 % <sup>6)</sup>	30000 / 50000 h <sup>7)</sup>	No	

Product description	Predecessor EAN	Capabilities			
		Dimmable	Overheating protection	Overload protection	Short-circuit protection
ELEMENT 6/220-240/150 G3	4052899552821	No	No	Automatic reversible	Automatic reversible
ELEMENT 8/220-240/200 G3	4052899552845	No	No	Automatic reversible	Automatic reversible

## Product family datasheet

Product description	Predecessor EAN	Capabilities			
		Dimmable	Overheating protection	Overload protection	Short-circuit protection
ELEMENT 10/220-240/250 G3	4052899552869	No	No	Automatic reversible	Automatic reversible
ELEMENT 12/220-240/300 G3	4052899552883	No	No	Automatic reversible	Automatic reversible
ELEMENT 15/220-240/350 G3	4052899552906	No	No	Automatic reversible	Automatic reversible
ELEMENT 20/220-240/500 G3	4052899552920	No	No	Automatic reversible	Automatic reversible
ELEMENT 25/220-240/600 G3	4052899552944	No	No	Automatic reversible	Automatic reversible
ELEMENT 28/220-240/700 G3	4052899552999	No	No	Automatic reversible	Automatic reversible
ELEMENT 33/220-240/800 G3	4052899553019	No	No	Automatic reversible	Automatic reversible
ELEMENT 35/220...240/900 G3	4052899553033	No	No	Automatic reversible	Automatic reversible
ELEMENT 38/220-240/950 G3		No	No	Automatic reversible	Automatic reversible
ELEMENT 42/220-240/1050 G3	4052899553057	No	No	Automatic reversible	Automatic reversible

Product description	No-load proof	Intended for no-load operation	Max. cable length to lamp/LED module	Suitable for fixtures with prot. class
ELEMENT 6/220-240/150 G3	Automatic reversible	No	2.0 m <sup>8)</sup>	I / II
ELEMENT 8/220-240/200 G3	Automatic reversible	No	2.0 m <sup>8)</sup>	I / II
ELEMENT 10/220-240/250 G3	Automatic reversible	No	2.0 m <sup>8)</sup>	I / II
ELEMENT 12/220-240/300 G3	Automatic reversible	No	2.0 m <sup>8)</sup>	I / II
ELEMENT 15/220-240/350 G3	Automatic reversible	No	2.0 m <sup>8)</sup>	I / II
ELEMENT 20/220-240/500 G3	Automatic reversible	No	2.0 m <sup>8)</sup>	I / II
ELEMENT 25/220-240/600 G3	Automatic reversible	No	2.0 m <sup>8)</sup>	I / II
ELEMENT 28/220-240/700 G3	Automatic reversible	No	2.0 m <sup>8)</sup>	I / II
ELEMENT 33/220-240/800 G3	Automatic reversible	No	2.0 m <sup>8)</sup>	I / II
ELEMENT 35/220...240/900 G3	Automatic reversible	No	2.0 m <sup>8)</sup>	I / II
ELEMENT 38/220-240/950 G3	Automatic reversible	No	2.0 m <sup>8)</sup>	I / II
ELEMENT 42/220-240/1050 G3	Automatic reversible	No	2.0 m <sup>8)</sup>	I / II

Product description	Type of connection, input side	Type of connection, output side	Suitable for through-wiring	Number of channels
ELEMENT 6/220-240/150 G3	Push terminal	Push terminal	No	1
ELEMENT 8/220-240/200 G3	Push terminal	Push terminal	No	1
ELEMENT 10/220-240/250 G3	Push terminal	Push terminal	No	1
ELEMENT 12/220-240/300 G3	Push terminal	Push terminal	No	1

## Product family datasheet

Product description	Type of connection, input side	Type of connection, output side	Suitable for through-wiring	Number of channels
ELEMENT 15/220-240/350 G3	Push terminal	Push terminal	No	1
ELEMENT 20/220-240/500 G3	Push terminal	Push terminal	No	1
ELEMENT 25/220-240/600 G3	Push terminal	Push terminal	No	1
ELEMENT 28/220-240/700 G3	Push terminal	Push terminal	No	1
ELEMENT 33/220-240/800 G3	Push terminal	Push terminal	No	1
ELEMENT 35/220...240/900 G3	Push terminal	Push terminal	No	1
ELEMENT 38/220-240/950 G3	Push terminal	Push terminal	No	1
ELEMENT 42/220-240/1050 G3	Push terminal	Push terminal	No	1

Product description	Programming		Certificates & standards	
	Tuner4TRONIC	Tuner4TRONIC Field App	Approval marks – approval	Standards
ELEMENT 6/220-240/150 G3	No	No	CE / CCC / RCM / ENEC 25 <sup>9)</sup>	Acc. to IEC 61347-1/Acc. to IEC 61347-2-13/Acc. to IEC 62384/Acc. to IEC 61000-3-2/Acc. to IEC 61547/Acc. to IEC 61000-3-3
ELEMENT 8/220-240/200 G3	No	No	CE / CCC / RCM / ENEC 25 <sup>9)</sup>	Acc. to IEC 61347-1/Acc. to IEC 61347-2-13/Acc. to IEC 62384/Acc. to IEC 61000-3-2/Acc. to IEC 61547/Acc. to IEC 61000-3-3
ELEMENT 10/220-240/250 G3	No	No	CE / CCC / RCM / ENEC 25 <sup>9)</sup>	Acc. to IEC 61347-1/Acc. to IEC 61347-2-13/Acc. to IEC 62384/Acc. to IEC 61000-3-2/Acc. to IEC 61547/Acc. to IEC 61000-3-3
ELEMENT 12/220-240/300 G3	No	No	CE / CCC / RCM / ENEC 25 <sup>9)</sup>	Acc. to IEC 61347-1/Acc. to IEC 61347-2-13/Acc. to IEC 62384/Acc. to IEC 61000-3-2/Acc. to IEC 61547/Acc. to IEC 61000-3-3
ELEMENT 15/220-240/350 G3	No	No	CE / CCC / RCM / ENEC 25 <sup>9)</sup>	Acc. to IEC 61347-1/Acc. to IEC 61347-2-13/Acc. to IEC 62384/Acc. to IEC 61000-3-2/Acc. to IEC 61547/Acc. to IEC 61000-3-3

## Product family datasheet

Product description	Programming		Certificates & standards	
	Tuner4TRONIC	Tuner4TRONIC Field App	Approval marks – approval	Standards
ELEMENT 20/220-240/500 G3	No	No	CE / CCC / RCM / ENEC 25 <sup>9)</sup>	Acc. to IEC 61347-1/Acc. to IEC 61347-2-13/Acc. to IEC 62384/Acc. to IEC 61000-3-2/Acc. to IEC 61547/Acc. to IEC 61000-3-3
ELEMENT 25/220-240/600 G3	No	No	CE / CCC / RCM / ENEC 25 <sup>9)</sup>	Acc. to IEC 61347-1/Acc. to IEC 61347-2-13/Acc. to IEC 62384/Acc. to IEC 61000-3-2/Acc. to IEC 61547/Acc. to IEC 61000-3-3
ELEMENT 28/220-240/700 G3	No	No	CE / CCC / RCM / ENEC 25 <sup>9)</sup>	Acc. to IEC 61347-1/Acc. to IEC 61347-2-13/Acc. to IEC 62384/Acc. to IEC 61000-3-2/Acc. to IEC 61547/Acc. to IEC 61000-3-3
ELEMENT 33/220-240/800 G3	No	No	CE / CCC / RCM / ENEC 25 <sup>9)</sup>	Acc. to IEC 61347-1/Acc. to IEC 61347-2-13/Acc. to IEC 62384/Acc. to IEC 61000-3-2/Acc. to IEC 61547/Acc. to IEC 61000-3-3
ELEMENT 35/220...240/900 G3	No	No	CE / CCC / RCM / ENEC 25 <sup>9)</sup>	Acc. to IEC 61347-1/Acc. to IEC 61347-2-13/Acc. to IEC 62384/Acc. to IEC 61000-3-2/Acc. to IEC 61547/Acc. to IEC 61000-3-3
ELEMENT 38/220-240/950 G3	No	No	CE / CCC / RCM / ENEC 25 <sup>9)</sup>	Acc. to IEC 61347-1/Acc. to IEC 61347-2-13/Acc. to IEC 62384/Acc. to IEC 61000-3-2/Acc. to IEC 61547/Acc. to IEC 61000-3-3
ELEMENT 42/220-240/1050 G3	No	No	CE / CCC / RCM / ENEC 25 <sup>9)</sup>	Acc. to IEC 61347-1/Acc. to IEC 61347-2-13/Acc. to IEC 62384/Acc. to IEC 61000-3-2/Acc. to IEC 61547/Acc. to IEC 61000-3-3



## Product family datasheet

Product description	Type of protection	Protection class	Logistical data	Environmental information according Art. 33 of EU Regulation (EC) 1907/2006 (REACH)
			Commodity code	Date of Declaration
ELEMENT 6/220-240/150 G3	IP20	I,II	850440839000	22-05-2023
ELEMENT 8/220-240/200 G3	IP20	I,II	850440839000	22-05-2023
ELEMENT 10/220-240/250 G3	IP20	I,II	850440839000	22-05-2023
ELEMENT 12/220-240/300 G3	IP20	I,II	850440839000	22-05-2023
ELEMENT 15/220-240/350 G3	IP20	I,II	850440839000	22-05-2023
ELEMENT 20/220-240/500 G3	IP20	I,II	850440839000	22-05-2023
ELEMENT 25/220-240/600 G3	IP20	I,II	850440839000	22-05-2023
ELEMENT 28/220-240/700 G3	IP20	I,II	850440839000	22-05-2023
ELEMENT 33/220-240/800 G3	IP20	I,II	850440839000	21-09-2022
ELEMENT 35/220...240/900 G3	IP20	I,II	850440839000	22-05-2023
ELEMENT 38/220-240/950 G3	IP20	I,II	850440839000	21-09-2022
ELEMENT 42/220-240/1050 G3	IP20	I,II	850440839000	22-05-2023

Product description	Primary Article Identifier	Candidate List Substance 1	CAS No. of substance 1	Safe Use Instruction
ELEMENT 6/220-240/150 G3	4062172167390	Lead	7439-92-1	The identification of the Candidate List substance is sufficient to allow safe use of the article.
ELEMENT 8/220-240/200 G3	4062172167413	Lead	7439-92-1	The identification of the Candidate List substance is sufficient to allow safe use of the article.
ELEMENT 10/220-240/250 G3	4062172167437	Lead	7439-92-1	The identification of the Candidate List substance is sufficient to allow safe use of the article.
ELEMENT 12/220-240/300 G3	4062172167451	Lead	7439-92-1	The identification of the Candidate List substance is sufficient to allow safe use of the article.
ELEMENT 15/220-240/350 G3	4062172167475	Lead	7439-92-1	The identification of the Candidate List substance is sufficient to allow safe use of the article.

## Product family datasheet

Product description	Primary Article Identifier	Candidate List Substance 1	CAS No. of substance 1	Safe Use Instruction
ELEMENT 20/220-240/500 G3	4062172167499	Lead	7439-92-1	The identification of the Candidate List substance is sufficient to allow safe use of the article.
ELEMENT 25/220-240/600 G3	4062172167512	Lead	7439-92-1	The identification of the Candidate List substance is sufficient to allow safe use of the article.
ELEMENT 28/220-240/700 G3	4062172167536	Lead	7439-92-1	The identification of the Candidate List substance is sufficient to allow safe use of the article.
ELEMENT 33/220-240/800 G3	4062172167550	Lead	7439-92-1	The identification of the Candidate List substance is sufficient to allow safe use of the article.
ELEMENT 35/220...240/900 G3	4062172167574	Lead	7439-92-1	The identification of the Candidate List substance is sufficient to allow safe use of the article.
ELEMENT 38/220-240/950 G3	4062172167598	Lead	7439-92-1	The identification of the Candidate List substance is sufficient to allow safe use of the article.
ELEMENT 42/220-240/1050 G3	4062172167611	Lead	7439-92-1	The identification of the Candidate List substance is sufficient to allow safe use of the article.

Product description	Declaration No. in SCIP database
ELEMENT 6/220-240/150 G3	1855e71e-55c6-4ba0-ae2a-20b7221637f6
ELEMENT 8/220-240/200 G3	41a24659-9ae5-4767-ac80-31ea1e997471

## Product family datasheet

Product description	Declaration No. in SCIP database
ELEMENT 10/220-240/250 G3	07aaaa40-c9c9-4c34-a9f0-50a4de1f79e3
ELEMENT 12/220-240/300 G3	b1f638b6-26b3-444c-b287-8d54ee2ad0ef
ELEMENT 15/220-240/350 G3	9ac997a5-345a-4140-9f99-0cdbe6f877db
ELEMENT 20/220-240/500 G3	5a1bead4-9938-4a89-89cf-9393e29c98f7
ELEMENT 25/220-240/600 G3	bf6c3ee4-f726-41cf-9d0b-993af35ea073
ELEMENT 28/220-240/700 G3	06f73198-5148-48cc-b68d-b887f9fa78a3
ELEMENT 33/220-240/800 G3	bc02cbfe-9655-4798-a27b-0a18bba26ff1
ELEMENT 35/220...240/900 G3	01ce7a47-6907-4d21-996a-90bac7983309
ELEMENT 38/220-240/950 G3	368f2869-c845-460c-9fe9-92787b5e2f12
ELEMENT 42/220-240/1050 G3	a951e84e-8c46-433c-9b54-ae04a09e462d

1) at 230 V, 50 Hz

2) At 230 V, Input power 7.7 W max.

3)  $t_{width} = 100 \mu s$  (measured at 50 %  $I_{peak}$ )

4) Partial load

5) Solid/ Flexible Leads

6) Non-condensing

7) At maximum  $T_c = 80^\circ C$  / 10% failure rate

8) Output wires must be routed as close as possible to each other

9) In preparation

10) At 230 V, Input power 10.1 W max.

11) At 230 V, Input power 12.3 W max.

12) At 230 V, Input power 14.7 W max.

13) At 230 V, Input power 17.1 W max.

14) At 230V, Input power 23 W max.

15) At 230V, Input power 27.5W max.

16) At 230V, Input power 31.8W max.

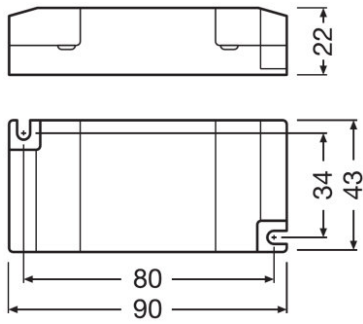
17) At 230V, Input power 36.3W max.

18) At 230V, Input power 40.5W max.

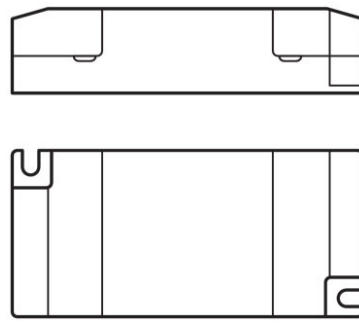
19) At 230V, Input power 42.7W max.

20) At 230 V, Input power 46.6 W max.

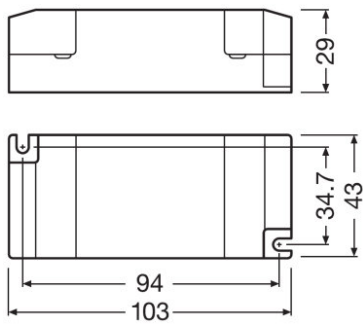
## Product family datasheet



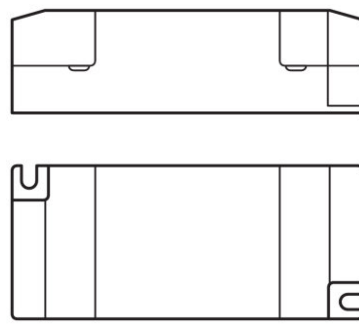
Line drawing of ELEMENT G3



Line drawing of ELEMENT G3



Line drawing of Element G3



Line drawing of Element G3



### Application advice

For more detailed application information and graphics please see product datasheet.






### Sales and Technical Support

Sales and Technical Support [www.osram.com](http://www.osram.com)

### Download Data

File	
	User instruction ELEMENT LED Power Supply
	User instruction ELEMENT LED Power Supply

## Product family datasheet

	Certificates ELEMENT G3 ENEC U6 084117 0084 080621
	Declarations of conformity ELEMENT G3 CE 4232185 150322
	Declarations of conformity ELEMENT G3 UK DoC 4281070 150222
	CAD data ELEMENT 6 15 G3 STEP 250321
	CAD data ELEMENT 20 42 G3 STEP 250321

### Ecodesign regulation information:

Intended for use with LED modules.

The forward voltage of the LED light source shall be within the defined operating window of the control gear in all operating conditions including dimming if applicable.

Separate control gear and light sources must be disposed of at certified disposal companies in accordance with Directive 2012/19/EU (WEEE) in the EU and with Waste Electrical and Electronic Equipment (WEEE) Regulations 2013 in the UK. For this purpose, collection points for recycling centres and take-back systems (CRSO) are available from retailers or private disposal companies, which accept separate control gear and light sources free of charge. In this way, raw materials are conserved and materials are recycled.

### Logistical Data

Product code	Product description	Packaging unit (Pieces/Unit)	Dimensions (length x width x height)	Volume	Gross weight
4062172167390	ELEMENT 6/220-240/150 G3	Shipping carton box 20	311 mm x 195 mm x 92 mm	5.58 dm <sup>3</sup>	1243.00 g
4062172167413	ELEMENT 8/220-240/200 G3	Shipping carton box 20	311 mm x 195 mm x 92 mm	5.58 dm <sup>3</sup>	1243.00 g
4062172167437	ELEMENT 10/220-240/250 G3	Shipping carton box 20	311 mm x 195 mm x 92 mm	5.58 dm <sup>3</sup>	1243.00 g
4062172167451	ELEMENT 12/220-240/300 G3	Shipping carton box 20	311 mm x 195 mm x 92 mm	5.58 dm <sup>3</sup>	1243.00 g
4062172167475	ELEMENT 15/220-240/350 G3	Shipping carton box 20	311 mm x 195 mm x 92 mm	5.58 dm <sup>3</sup>	1243.00 g
4062172167499	ELEMENT 20/220-240/500 G3	Shipping carton box 20	311 mm x 224 mm x 104 mm	7.25 dm <sup>3</sup>	1578.00 g
4062172167512	ELEMENT 25/220-240/600 G3	Shipping carton box 20	311 mm x 224 mm x 104 mm	7.25 dm <sup>3</sup>	1578.00 g
4062172167536	ELEMENT 28/220-240/700 G3	Shipping carton box 20	311 mm x 224 mm x 104 mm	7.25 dm <sup>3</sup>	1578.00 g

## Product family datasheet

---

### Logistical Data

4062172167550	ELEMENT 33/220-240/800 G3	Shipping carton box 20	311 mm x 224 mm x 104 mm	7.25 dm <sup>3</sup>	1578.00 g
4062172167574	ELEMENT 35/220...240/900 G3	Shipping carton box 20	311 mm x 224 mm x 104 mm	7.25 dm <sup>3</sup>	1578.00 g
4062172167598	ELEMENT 38/220-240/950 G3	Shipping carton box 20	311 mm x 224 mm x 104 mm	7.25 dm <sup>3</sup>	1578.00 g
4062172167611	ELEMENT 42/220-240/1050 G3	Shipping carton box 20	311 mm x 224 mm x 104 mm	7.25 dm <sup>3</sup>	1578.00 g

The mentioned product code describes the smallest quantity unit which can be ordered. One shipping unit can contain one or more single products. When placing an order, for the quantity please enter single or multiples of a shipping unit.

---

### Disclaimer

Subject to change without notice. Errors and omission excepted. Always make sure to use the most recent release.