

# Lightbar VX1000-CB SM



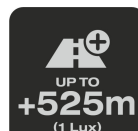
## Double ECE-Certification – 2 x ECE R112

The necessary tests and approvals were carried out and an ECE type approval was granted. 2) Central single mount possible. ECE reference number: 37.5 + 37.5



## Combo Beam

Designed for both: far-field and near-field illumination. For widespread illumination in the near field and spot illumination in the far field.



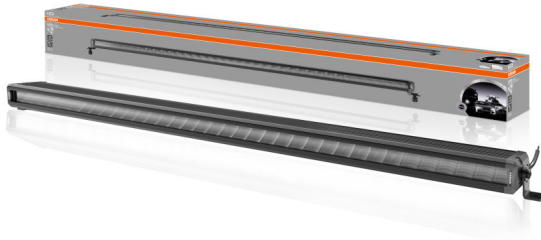
## Up to 525m long light beam

See and be seen with OSRAM. Special curved reflector design with extraordinary performance.



## On-road & Off-road

Versatile applicable and flexible in use. On-road & off-road, in terrain, at work and in the spare time.



### Bringing light to life with OSRAM LEDriving driving and working lights

Considerable foresight on dark country roads, forest paths, off the beaten tracks, off-road and on-road- this can be achieved with the OSRAM LEDriving Lightbar VX1000-CB SM. With its 36 powerful, high-performance OSRAM long-life LEDs, the VX1000-CB SM has a range of up to 525 meters and thus offers the driver impressive foresight on-road and off-road. Even in dim light and reduced visibility due to external environmental influences, the OSRAM LEDriving Lightbar VX1000-CB SM with up to 6000 Kelvin can provide conditions similar to daylight. The power package with up to 6000 lumens of luminosity scores with highest optical efficiency and homogeneous light distribution. This results in the possibility of an improved view for you and the improved visibility of your vehicle by other road users, and consequently also increased safety on-road and off-road. Whether on-road or off-road - The OSRAM LEDriving Lightbar VX1000-CB SM impresses with its powerful performance and a long service life with up to 5000 hours. Versatile applicable, it defies numerous environmental influences and, thanks to high-quality materials such as the aluminum housing and the stable polycarbonate lens, it is particularly light and at the same time robust and resistant. The OSRAM LEDriving Lightbar VX1000-CB SM has been tested and validated with the IP-Protection Class IP67 in our DIN certified environmental simulation laboratory for extreme external influences regarding water, dust, impacts, heat, cold and permanent vibration. The integrated driver and the thermal management system regulate the temperature of the LED Lightbar and can thus prevent damage from overheating. The polarity protection inhibits the wrong polarity of the voltage supply and can thus prevent possible damage by automatically switching off the LEDs. On-road and off-road, the OSRAM LEDriving Lightbar VX1000-CB SM is an effective and efficient addition to your vehicle. No registration or entry in the vehicle documents is necessary for these ECE-certified LED driving lights 2) ECE reference number: 37.5 + 37.5 The OSRAM LEDriving Lightbar VX1000-CB SM can be attached to cars, trucks, agricultural machinery, farm machinery, commercial vehicles, construction vehicles, caravans, off-road vehicles and quads 2) The OSRAM LEDriving Lightbar VX1000-CB SM is versatile applicable and flexible in use. 2) OSRAM LEDriving Driving Lights are approved according to ECE regulations and may therefore be installed and operated on public roads. Please note: Special installation regulations apply. In addition to ECE approval of the product, individual special requirements and legislation of the countries must be observed.

Product family datasheet

Technical data






Product description	Product information		Electrical data			Photometrical data
	Order reference	Application (Category and Product specific)	Nominal voltage	Nominal wattage	Test voltage	Luminous flux
Lightbar VX1000-CB SM <sup>1)</sup>	LEDDL120-CB SR	Additional high beam application	12/24 V	10800 W	13.2 V	6000 lm

Product description	LED module information	Lifespan	Capabilities	Certificates & standards	Logistical data
	Number of LEDs per module	Lifespan Tc	Technology	ECE reference number	Commodity code
Lightbar VX1000-CB SM <sup>1)</sup>	36	5000 h	LED <sup>2)</sup>	37.5 + 37.5	85122000900

Product description	Environmental information Information according Art. 33 of EU Regulation (EC) 1907/2006 (REACH)		
	Date of Declaration	Primary Article Identifier	Declaration No. in SCIP database
Lightbar VX1000-CB SM <sup>1)</sup>	28-02-2024	4062172232159	In work

<sup>1)</sup> Beam Pattern: Combo  
<sup>2)</sup> Light-emitting diode application

Download Data

File	
	Brochures OSRAM Lightbar VX1000-CB SM Flyer (EN)
	Movie application Product Video OSRAM LEDriving Lightbar VX1000-CB SM (EN)
	Movie application Driving and working lights Island Trailer (EN)
	Video Video OSRAM LEDriving driving & working
	Video Product Video OSRAM LEDriving Lightbar VX1000-CB SM

Legal advice

Legal advice:The installation of the OSRAM LEDriving Lightbar VX1000-CB SM is fully ECE compliant and therefore registrationfree. This does not include individual custom requirements of countries, in addition to the standardized ECE certification ofthe product. 1) Precise terms and conditions at: [www.osram.com/am-guarantee](http://www.osram.com/am-guarantee)2)OSRAM LEDriving Driving Lights are approved according to ECE regulations and may therefore be installed and operated on public roads. Please note: Special installation regulations apply. In addition to ECE approval of the product, individual special requirements and legislation of the countries must be observed.

Refer to [www.osram.com/am-guarantee](http://www.osram.com/am-guarantee) for precise conditions

Application advice

For more detailed application information and graphics please see product datasheet.

Disclaimer

Subject to change without notice. Errors and omission excepted. Always make sure to use the most recent release.