

LEDDriving HL INTENSE H4/H19



Up to +350% more brightness

More light allows to see farther and therefore react sooner. Signs, obstacles and hazards can be recognized sooner. Compared to minimum ECE R112



Very compact LED replacement for conventional H4/H19 high and low beam lamps (2in1)

Reduced glaring thanks to an optimized light distribution



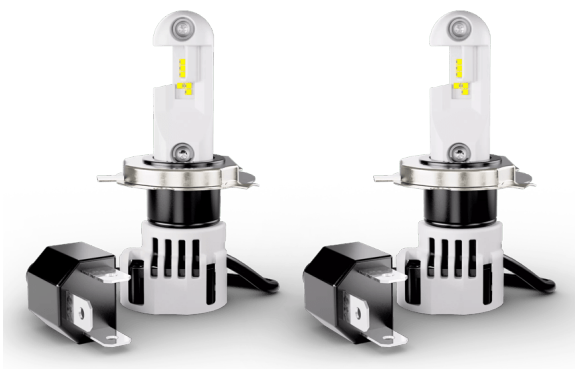
Cool White color temperature of 6,000 K

Better visibility thanks to daylight effect



5-year OSRAM guarantee

For precise conditions, please refer to www.osram.com/am-guarantee



OSRAM's highest performing LED off-road retrofit lamp

With up to +350% more brightness (compared to ECE R112) and a very compact LED replacement of conventional H7/H18 and H4/H19 high and low beam lamps, the LEDDriving HL INTENSE is OSRAM's highest performing LED off-road retrofit lamp ever! This LED retrofit lamp offers OSRAM top technology beam pattern as well as an easy installation with a wide OSRAM range of suitable accessories. Top thermal management technology with integrated active cooling – a high speed fan ensures maximized heat dissipation for more powerful performances. Also premium OSRAM quality, manufactured in a certified OSRAM production plant in Italy, and a 5-year guarantee as well as a long service life. For precise guarantee conditions please refer to www.osram.com/am-guarantee. The LED high and low beam lamps by OSRAM replace conventional halogen lamps, are 12V compatible and have a color temperature of 6,000K. With the latest LED technology and very compact design, these lamps allow a high compatibility and an easy installation for an even wider range of car models. These products do not have ECE approval and must not be used on public roads in any exterior application. Public roads use leads to cancellation of operating license and loss of insurance coverage. Several countries forbid sale and use of these products. Please contact your local distributor for further information.

Product datasheet

Technical data

Product information

Product type (off-road vs. on-road)	Off-road \triangleq H4/H19
Application (Category and Product specific)	Mainly used for Low Beam, High Beam

General Product Information

Global order reference	64193DWINT
------------------------	------------

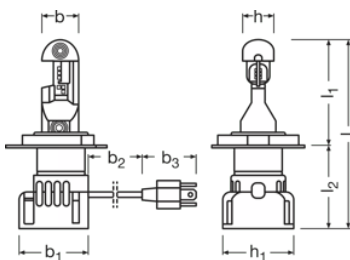
Electrical Data

Power input	25 / 21.0 W
Nominal voltage	12.0 V
Nominal wattage	27 W
Test voltage	13.2 V
Power input tolerance	± 15 %

Photometric Data

Nominal luminous flux	1900/1350 lm
Luminous flux tolerance	± 20 %
Color temperature	6000 K
Light color LED	Cool white

Physical Attributes & Dimensions



Length	87.4 mm
Diameter	18.5 mm
Product weight	76.00 g
Lamp base	-

Lifetime Data

Product datasheet

Lifespan Tc	5000 hr
Guarantee	5 years

Capabilities

Technology	LED
------------	-----

Environmental & Regulatory Information



Information according Art. 33 of EU Regulation (EC) 1907/2006 (REACH)	
Date of declaration	22-09-2024
Primary article identifier	4062172306454
Declaration no. in SCIP database	In work

Logistical Data

Product code	Product description	Packaging unit (Pieces/Unit)	Dimensions (length x width x height)	Volume	Gross weight
4062172306454	LEDiving HL INTENSE \cong H4/H19	Folding carton box 2	136 mm x 56 mm x 162 mm	1.23 dm ³	220.00 g
4062172306461	LEDiving HL INTENSE \cong H4/H19	Shipping carton box 8	240 mm x 148 mm x 182 mm	6.46 dm ³	1006.00 g

- The mentioned product code describes the smallest quantity unit which can be ordered. One shipping unit can contain one or more single products. When placing an order, for the quantity please enter single or multiples of a shipping unit.

Download Data

File
 User instruction LEDiving HL INTENSE
 Brochures LEDiving Retrofits - Exchange overview (EN)

Legal advice

These products do not have ECE approval and must not be used on public roads in any exterior application. Public roads use leads to cancellation of operating license and loss of insurance coverage. Several countries forbid sale and use of these products. Please contact your local distributor for further information.

Application advice

For more detailed application information and graphics please see product datasheet.

Disclaimer

Product datasheet

Subject to change without notice. Errors and omission excepted. Always make sure to use the most recent release.



OSRAM